


ILS RWY 21L (SA CAT I & II)
DETROIT METROPOLITAN WAYNE COUNTY (DTW)

MALSR 	MISSED APPROACH: Climb to 1100 then climbing left turn to 4000 on DXO R-122 to GAAGE/DXO 16 DME and hold, continue climb-in-hold to 4000.
--	--

MALSR

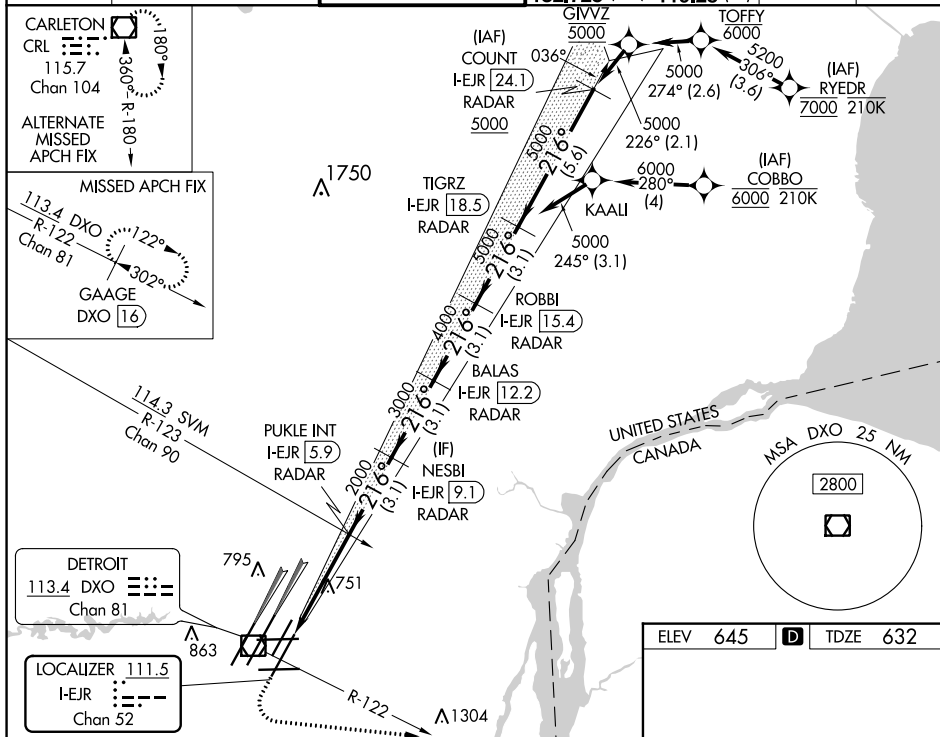
MISSED APCH FIX

113.4 DXO
R-122
Chan 81

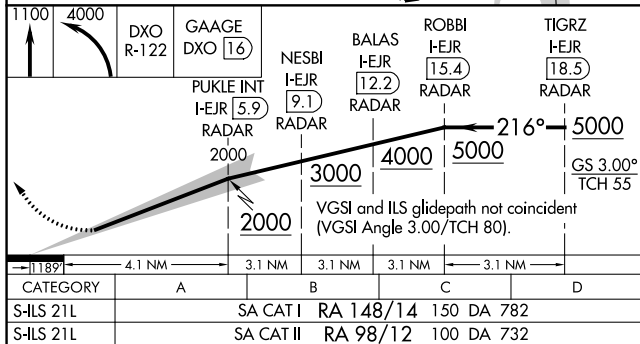
122°

302°

GAAGE
DXO 16



ELEV 645	D	TDZE 632
----------	----------	----------



HIRL all runways
REIL Rwy 3L, 9L, 9R and 21R
TDZ/CL Rwy 3R, 4L, 4R and 22R

ILS RWY 21L (SA CAT I & II)