

DETROIT, MICHIGAN

AL-119 (FAA)

20254

ILS PRM RWY 22L (CLOSE PARALLEL)

LOC/DME I-DWC 110.7 Chan 44	APP CRS 216°	Rwy Idg TDZE Apt Elev	12003 637 645
---	------------------------	-----------------------------	--

DETROIT METROPOLITAN WAYNE COUNTY (DTW)

RNAV 1-GPS.

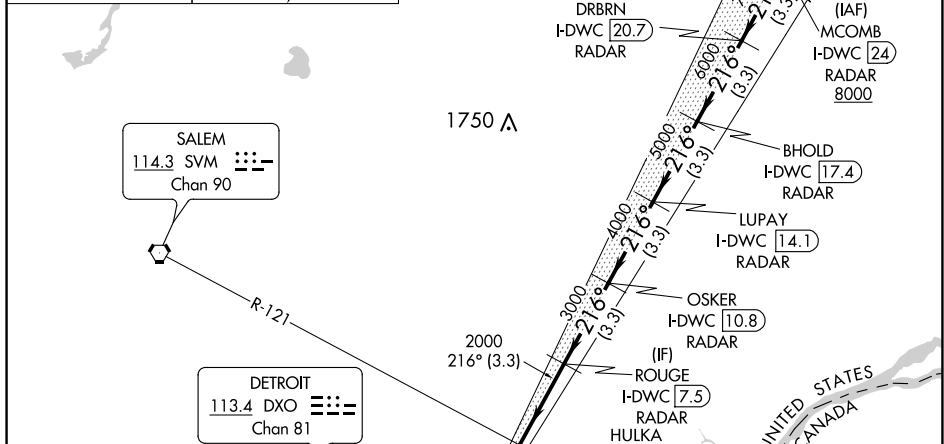
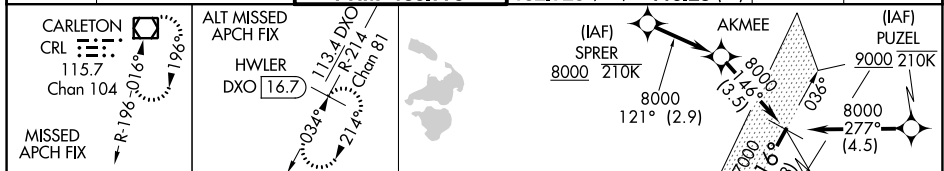
RNAV 1-DME/DME/IRU or RADAR required for procedure entry. DME or RADAR required.

Simultaneous approach authorized. Use of FD or AP required during simultaneous operations. Dual VHF comm required. See additional requirements on AAUP.
Procedure NA when glide slope not available.
*RVR 1800 authorized with use of FD or AP or HUD to DA.

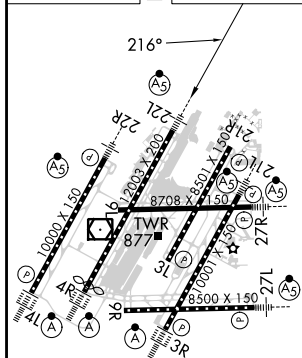


MISSED APPROACH:
Climb to 4000 on heading 216° and CRL VOR/DME R-025 to CRL VOR/DME and hold, continue climb-in-hold to 4000.

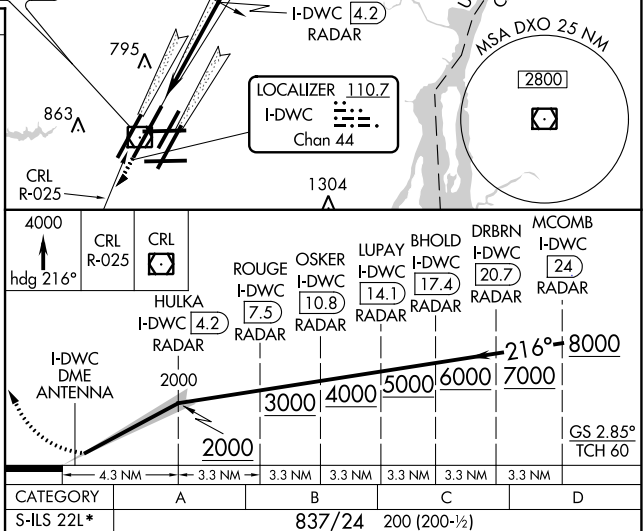
D-ATIS 133.675	DETROIT APP CON 124.05 284.0	METRO TOWER 128.125 317.725 PRM 135.775	GND CON 121.8 (NW) 119.45 (NE) 119.25 (SE)	CLNC DEL 120.65	CPDLC
--------------------------	--	---	--	---------------------------	-------



ELEV 645 TDZE 637



TDZ/CL Rwy 3R, 4L, 4R and 22R
REIL Rwy 3L, 9L, 9R and 21R
HIRL all runways

DETROIT, MICHIGAN
Amdt 2 24MAY18

42°13'N-83°21'W DETROIT METROPOLITAN WAYNE COUNTY (DTW)
ILS PRM RWY 22L (CLOSE PARALLEL)

EC-1, 31 DEC 2020 to 28 JAN 2021