

DETROIT, MICHIGAN

AL-119 (FAA)

20254

ILS PRM RWY 4R

(CLOSE PARALLEL)

DETROIT METROPOLITAN WAYNE COUNTY (DTW)

LOC/DME I-DTW <b>110.7</b>	APP CRS <b>036°</b>	Rwy Idg TDZE Apt Elev	<b>11494</b> <b>640</b> <b>645</b>
Chan <b>44</b>			

RNAV 1-GPS.

DME or RADAR required. CLEVR, CAATZ and ELDNN: RNAV 1-DME/DME/IRU or GPS required. Aircraft not DME/DME/IRU or GPS equipped- RADAR required for procedure entry.

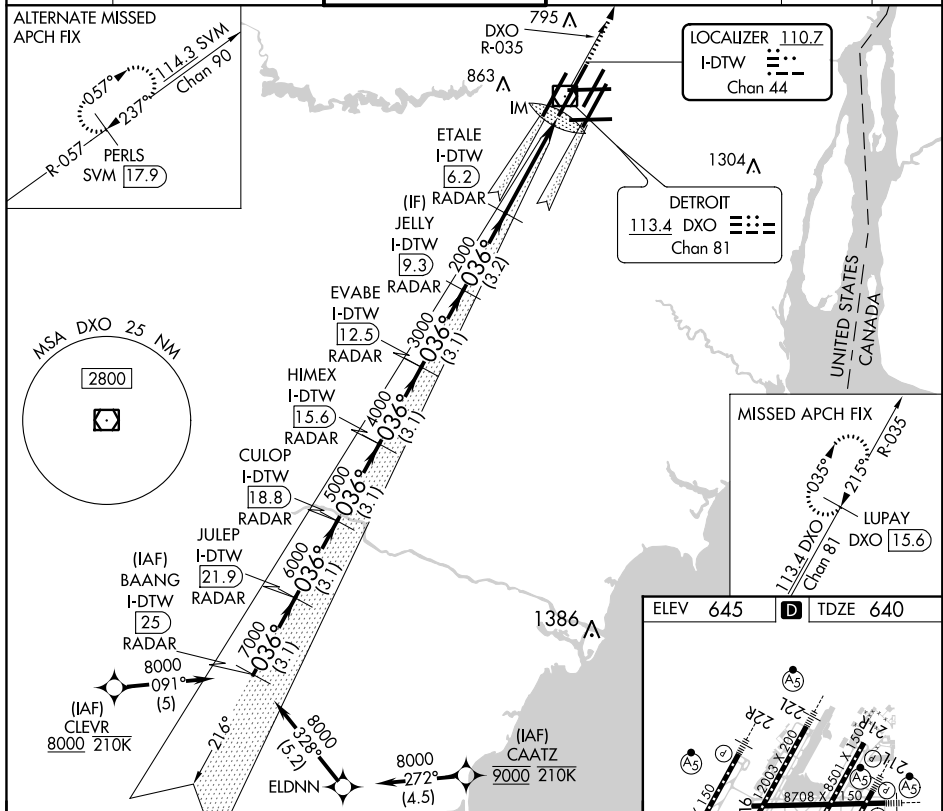
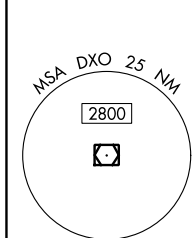
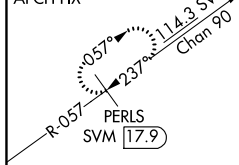
Simultaneous approach authorized. Use of FD or AP required during simultaneous operations. Dual VHF Comm required. See additional requirements on AAUP.  
Procedure NA when glideslope not available.

ALS-2

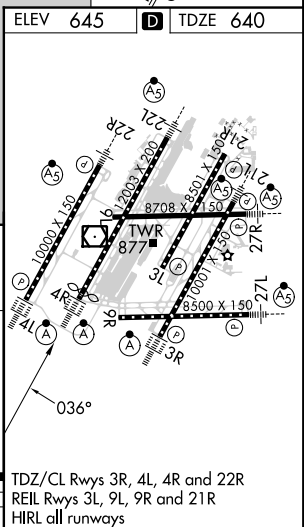
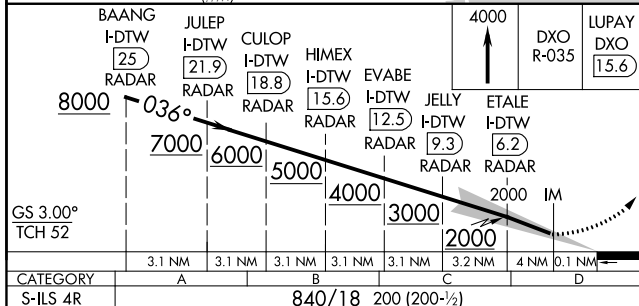
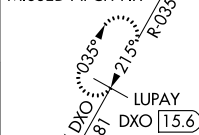


MISSED APPROACH:  
Climb to 4000 on DXO  
VOR/DME R-035 to  
LUPAY/DXO VOR/DME  
15.6 DME and hold.

D-ATIS <b>133.675</b>	DETROIT APP CON <b>124.05 284.0</b>	METRO TOWER <b>128.125 317.725</b> <b>PRM 135.775</b>	GND CON <b>121.8</b> (NW) <b>119.45</b> (NE) <b>132.725</b> (SW) <b>119.25</b> (SE)	CLNC DEL <b>120.65</b>	CPDLC
--------------------------	--	---	---	---------------------------	-------

ALTERNATE MISSED  
APCH FIX

MISSED APCH FIX



DETROIT, MICHIGAN

Amdt 3A 13SEP18

42°13'N-83°21'W

DETROIT METROPOLITAN WAYNE COUNTY (DTW)

ILS PRM RWY 4R (CLOSE PARALLEL)

EC-1, 31 DEC 2020 to 28 JAN 2021

EC-1, 31 DEC 2020 to 28 JAN 2021