

ILS PRM Z RWY 4L (CAT II & III)  
(CLOSE PARALLEL)

DETROIT METROPOLITAN WAYNE COUNTY (DTW)

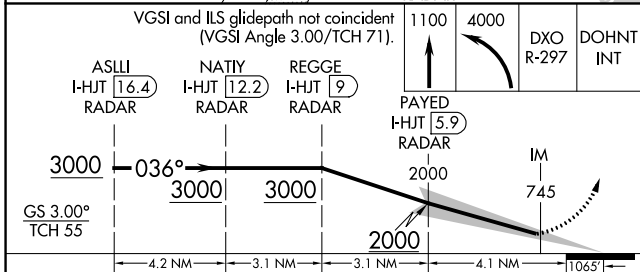
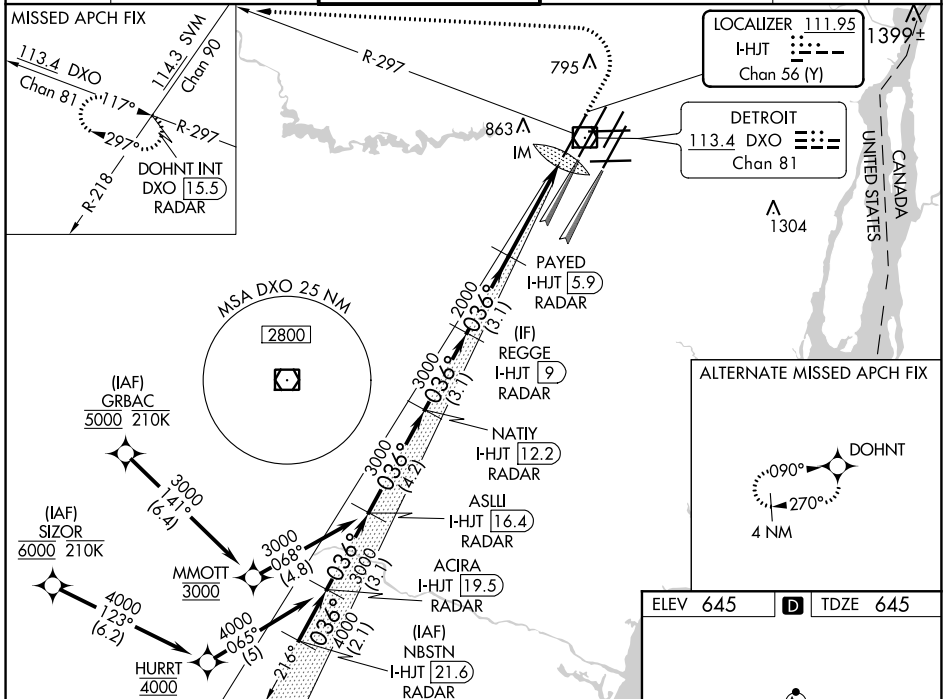
LOC/DME I-HJT	APP CRS	Rwy Idg	10000
111.95	036°	TDZE	645
Chan 56 (Y)		Apt Elev	645

From GRBAC, SIZOR: RNAV 1-DME/DME/IRU or GPS required. Aircraft not DME/DME/IRU or GPS equipped - RADAR required for procedure entry. DME or RADAR required.

Cat II: RVR 1000 authorized with specific OPSPEC, MSPEC, or LOA approval and use of autoland or HUD to touchdown. Simultaneous approach authorized. Use of FD or AP required during simultaneous operations. Dual VHF Comm required. See additional requirements on AAUP.

MISSED APPROACH: Climb to 1100 then climbing left turn to 4000 on DXO VOR/ DME R-297 to DOHNT INT/ DXO 15.5 DME/RADAR and hold.

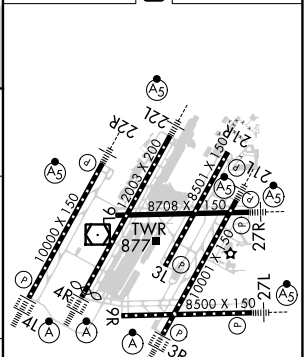
D-ATIS	DETROIT APP CON	METRO TOWER	GND CON	CLNC DEL	CPDLC
133.675	124.05 284.0	135.0 317.725 PRM 127.05	121.8 (NW) 119.45 (NE) 132.725 (SW) 119.25 (SE)	120.65	



CATEGORY	A	B	C	D
S-ILS 4L	CAT II	RA 101/12	100 DA 745	
S-ILS 4L	CAT III	RVR 06		

CATEGORY II & III ILS - SPECIAL AIRCREW  
& AIRCRAFT CERTIFICATION REQUIRED

ELEV 645	TDZE 645
----------	----------



TDZ/CL Rwy 3R, 4L, 4R and 22R  
REIL Rwy 3L, 9L, 9R and 21R  
HIRL all runways

ILS PRM Z RWY 4L (CAT II & III) (CLOSE PARALLEL)