

WAAS CH <b>86220</b> <b>W27A</b>	APP CRS <b>276°</b>	Rwy Idg <b>8708</b> TDZE <b>635</b> Apt Elev <b>645</b>
--	------------------------	---

RNAV (GPS) RWY 27R

DETROIT METROPOLITAN WAYNE COUNTY (DTW)

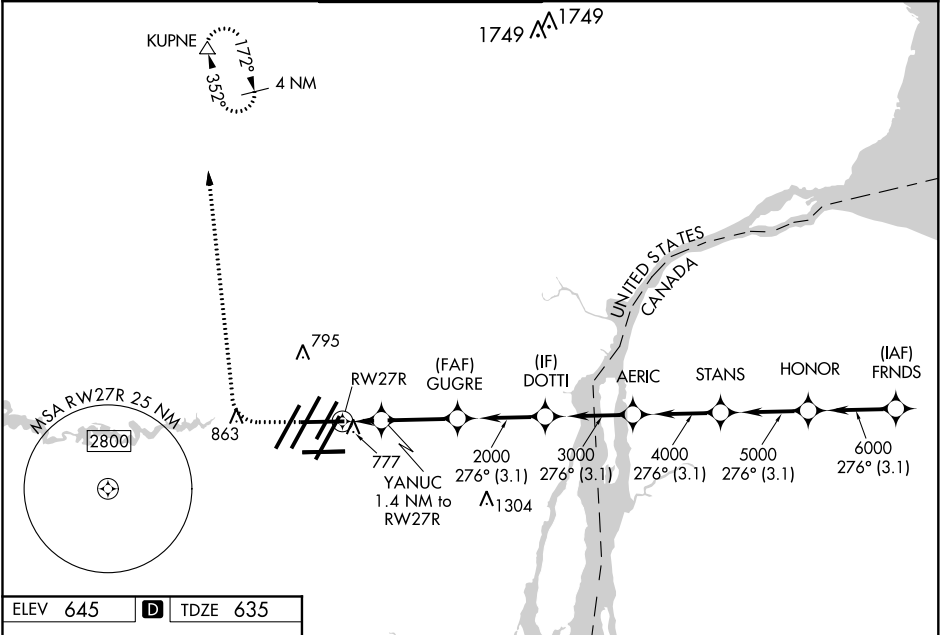
RNP APCH

▼ For uncompensated Baro-VNAV systems, LNAV/VNAV NA below -20°C (-4°F) or above 54°C (130°F). For inop ALS, increase LNAV Cat C and D visibility to RVR 6000. Simultaneous approach authorized. LNAV procedure NA during simultaneous operations. Use of FD or AP required during simultaneous operations.  
\*\* RVR 1800 authorized with use of FD or AP or HUD to DA.

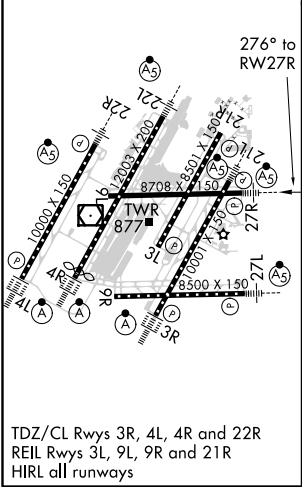
MALSR




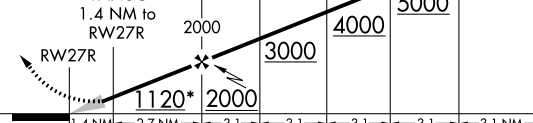

MISSED APPROACH: Climb to 1100 then climbing right turn to 4000 direct KUPNE and hold, continue climb-in-hold to 4000.

D-ATIS <b>133.675</b>	DETROIT APP CON <b>125.15 284.0</b>	METRO TOWER <b>118.4 317.725</b>	GND CON <b>121.8</b> (NW) <b>119.45</b> (NE) <b>132.725</b> (SW) <b>119.25</b> (SE)	CLNC DEL <b>120.65</b>	CPDLC
--------------------------	--	-------------------------------------	---	---------------------------	-------



ELEV 645	<b>D</b>	TDZE 635
----------	----------	----------



1100	4000	KUPNE	VGSi and RNAV glidepath not coincident (VGSi Angle 3.00/TCH 61).						
									
*LNAV only.			YANUC 1.4 NM to RW27R	GUGRE	DOTTI	AERIC	STANS	HONOR	FRNDS
			2000	2000	3000	4000	5000	6000	7000
			1120*	2000	3000	4000	5000	6000	7000
			1.4 NM	2.7 NM	3.1	3.1	3.1	3.1	3.1 NM
CATEGORY			A		B		C		D
LPV DA**			835/24		200 (200-½)				
LNAV/ VNAV DA			938/24		303 (300-½)				
LNAV MDA			1040/24 405 (400-½)		1040/40		405 (400-¾)		
 CIRCLING			1180-1 535 (600-1)		1180-1½ 535 (600-1½)		1240-2 595 (600-2)		