

DETROIT, MICHIGAN

AL-119 (FAA)

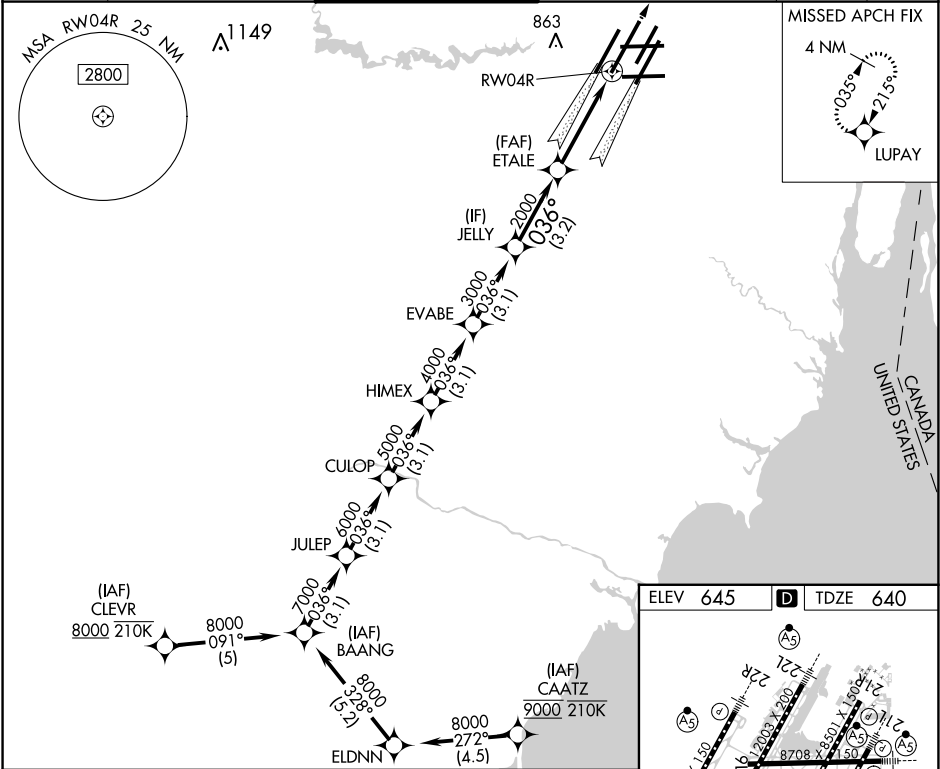
RNAV (GPS) PRM Z RWY 4R
(CLOSE PARALLEL)

DETROIT METROPOLITAN WAYNE COUNTY (DTW)

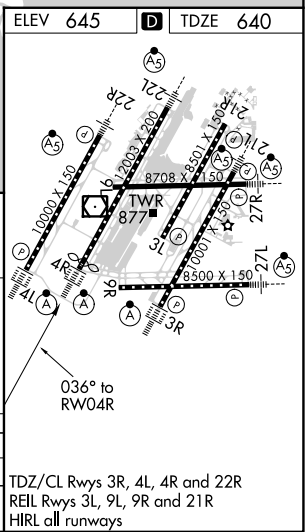
WAAS CH 87139 W04B	APP CRS 036°	Rwy Idg 11494 TDZE 640 Apt Elev 645
--	------------------------	--

RNP APCH. ▼ For uncompensated Baro-VNAV systems, LNAV/VNAV NA below -19°C or above 54°C. Simultaneous approach authorized. Use of FD or AP required during simultaneous operations. Dual VHF comm required. See additional requirements on AAUP.		ALSIF-2 A	MISSED APPROACH: Climb to 4000 direct LUPAY and hold.
---	--	--------------	--

D-ATIS 133.675	DETROIT APP CON 124.05 284.0	METRO TOWER 128.125 317.725 PRM 135.775	GND CON 121.8 (NW) 119.45 (NE) 132.725 (SW) 119.25 (SE)	CLNC DEL 120.65	CPDLC
--------------------------	--	---	---	---------------------------	-------



BAANG JULP CULOP HIMEX EVABE JELLY ETALE RWY 4R		4000	LUPAY
8000 036° 7000 6000 5000 4000 3000 2000			
GP 3.00° TCH 52			
3.1 NM 3.1 NM 3.1 NM 3.1 NM 3.1 NM 3.2 NM 4.1 NM			
CATEGORY		A B C D	
LPV DA		840/18	200 (200-½)
LNAV/VNAV DA		1021/35	381 (400-¾)



DETROIT, MICHIGAN
Amdt 1A 28FEB19

42°13'N-83°21'W
RNAV (GPS) PRM Z RWY 4R (CLOSE PARALLEL)

DETROIT METROPOLITAN WAYNE COUNTY (DTW)

EC-1, 31 DEC 2020 to 28 JAN 2021

EC-1, 31 DEC 2020 to 28 JAN 2021