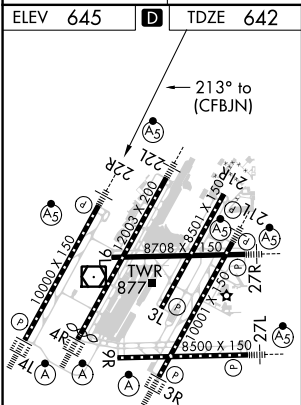
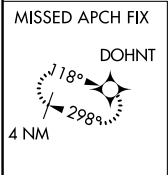
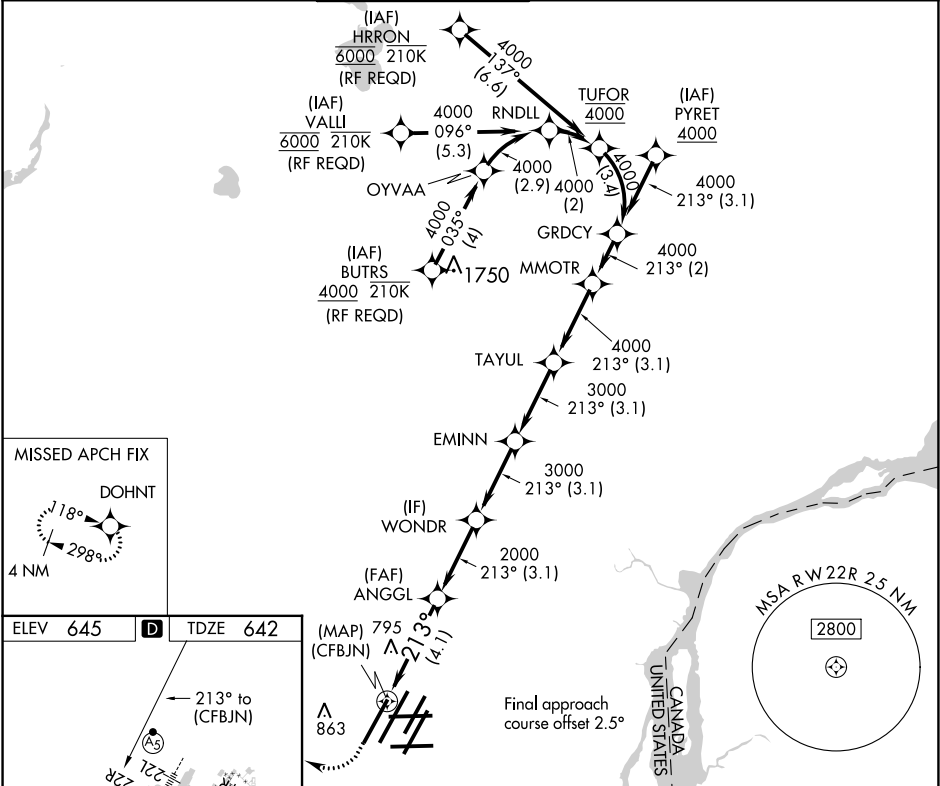



APP CRS	Rwy Idg	10000
213°	TDZE	642
	Apt Elev	645

RNAV (RNP) U RWY 22R
DETROIT METROPOLITAN WAYNE COUNTY (DTW)

RNP AR APCH.	MALSR	MISSED APPROACH: Climb to 1100 then climbing right turn to 4000 direct DOHNT and hold.
For uncompensated Baro-VNAV systems, procedure NA below -19°C (-2°F) or above 54°C (130°F). Simultaneous approach authorized. For inop ALS, increase RNP 0.30 all Cats visibility to RVR 5500.		

D-ATIS	DETROIT APP CON	METRO TOWER	GND CON	CLNC DEL	CPDLC
133.675	124.05 284.0	135.0 317.725	121.8 (NW) 119.45 (NE) 132.725 (SW) 119.25 (SE)	120.65	



1100 ↑	4000 ↗	DOHNT 	VGSI and RNAV glidepath not coincident (VGSI Angle 3.00/TCH 71).			
			EMINN	TAYUL	MMOTR	GRDCY
ANGGL		WONDR				
(CFB JN)	2000	3000	3000	4000	4000	4000
2000						GP 3.00° TCH 55
-4.1 NM		-3.1 NM	-3.1 NM	-3.1 NM	-2 NM	
CATEGORY	A		B		C	D
RNP 0.30 DA	987/30		345 (400-%)			
AUTHORIZATION REQUIRED						

TDZ/CL Rwy 3R, 4L, 4R and 22R
HIRL all runways
REIL Rwy 3L, 9L, 9R and 21R