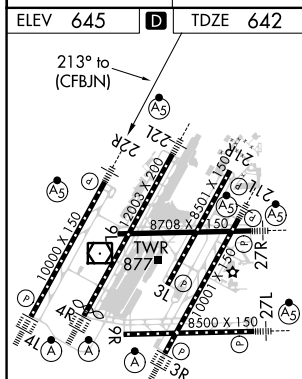
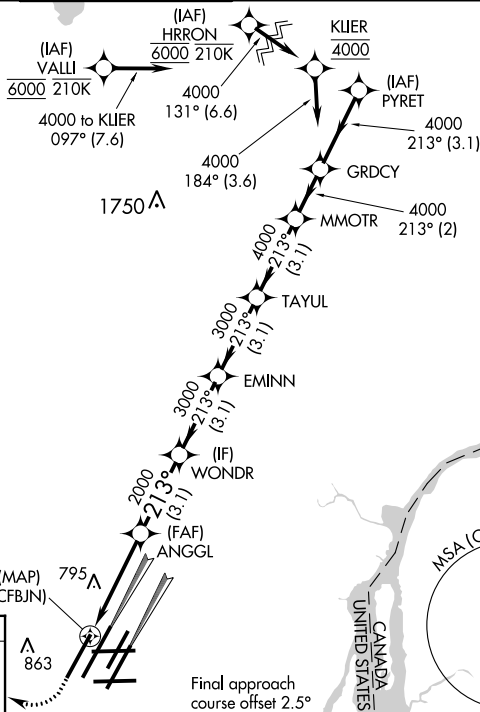


RNAV (GPS) Y RWY 22R
DETROIT METROPOLITAN WAYNE COUNTY (DTW)

MISSED APPROACH: Climb to 1100 then climbing right turn to 4000 direct DOHNT and hold.

RADAR REQUIRED



1100 ↑	4000 ↗	DOHNT ✦	VGSi and RNAV glidepath not coincident (VGSi Angle 3.00/TCH 71).			
*LNAV only.			TAYUL MMOTR GRDCY			
			ANGGL WONDRE EMINN 2000 3000 3000 4000 4000 213° 4000 GP 3.00° TCH 55			
			ANGGL WONDRE EMINN 2000 3000 3000 4000 4000 213° 4000 GP 3.00° TCH 55			
CATEGORY	A	B	C	D		
LPV DA	892/24		250 (300-1/2)			
LNAV/VNAV DA	1050/45		408 (500-7%)			
LNAV MDA	1060/24	418 (500-1/2)	1060/40	418 (500-3/4)		
C CIRCLING	1180-1	535 (600-1)	1180-1 1/2 535 (600-1 1/2)	1240-2 595 (600-2)		