

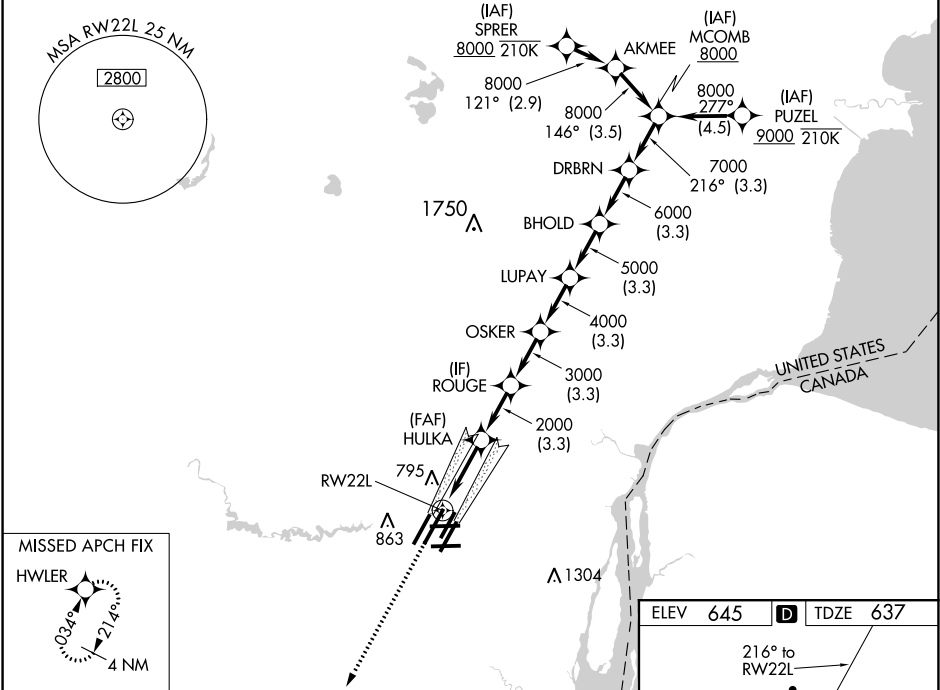
WAAS CH <b>99601</b> <b>W22A</b>	APP CRS <b>216°</b>	Rwy Idg <b>12003</b> TDZE <b>637</b> Apt Elev <b>645</b>
--	------------------------	--


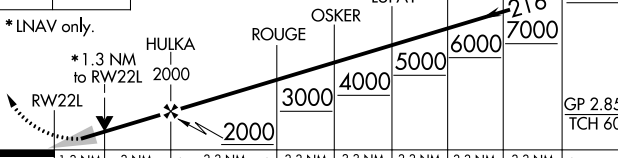

RNAV (GPS) Z RWY 22L

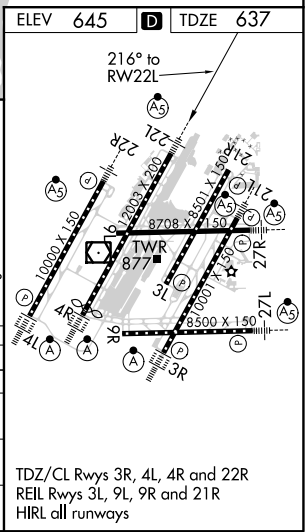
DETROIT METROPOLITAN WAYNE COUNTY (DTW)

RNP APCH.	For uncompensated Baro-VNAV systems, LNAV/VNAV NA below -10°C (14°F) or above 54°C (130°F). Simultaneous approach authorized. LNAV procedure NA during simultaneous operations. Use of FD or AP required during simultaneous operations. For inop ALS, increase LNAV/VNAV all Cats visibility to RVR 4500 and LNAV Cat C/D visibility to 1½ SM. #RVR 1800 authorized with use of FD or AP or HUD to DA.	MALSR 	MISSED APPROACH: Climb to 4000 direct HWLER and hold.
-----------	---	-----------	--

D-ATIS <b>133.675</b>	DETROIT APP CON <b>124.05 284.0</b>	METRO TOWER <b>128.125 317.725</b>	GND CON <b>121.8 (NW) 119.45 (NE)</b> <b>132.725 (SW) 119.25 (SE)</b>	CLNC DEL <b>120.65</b>	CPDLC
--------------------------	--	---------------------------------------	---	---------------------------	-------



4000	↑	HWLER			
<p>* LNAV only.</p>  <p>* 1.3 NM to RW22L</p> <p>HULKA 2000</p> <p>ROUGE 3000</p> <p>OSKER 4000</p> <p>LUPAY 5000</p> <p>BHOLD 6000</p> <p>DRBRN 7000</p> <p>MCOMB 8000</p> <p>216°</p> <p>GP 2.85° TCH 60°</p> <p>1.3 NM 3 NM 3.3 NM 3.3 NM 3.3 NM 3.3 NM 3.3 NM</p>					
CATEGORY		A	B	C	D
LPV	DA #	837/24		200 (200-½)	
LNAV/ VNAV	DA	938/24		301 (300-½)	
LNAV	MDA	1100/24 463 (500-½)		1100/50 463 (500-¾)	
 CIRCLING		1180-1 535 (600-1)		1180-1½ 535 (600-1½)	1240-2 595 (600-2)



EC-1, 31 DEC 2020 to 28 JAN 2021

EC-1, 31 DEC 2020 to 28 JAN 2021