

WAAS CH <b>61304</b> <b>W03A</b>	APP CRS <b>036°</b>	Rwy Idg <b>10001</b> TDZE <b>633</b> Apt Elev <b>645</b>
--	------------------------	--

RNAV (GPS) Z RWY 3R

DETROIT METROPOLITAN WAYNE COUNTY (DTW)

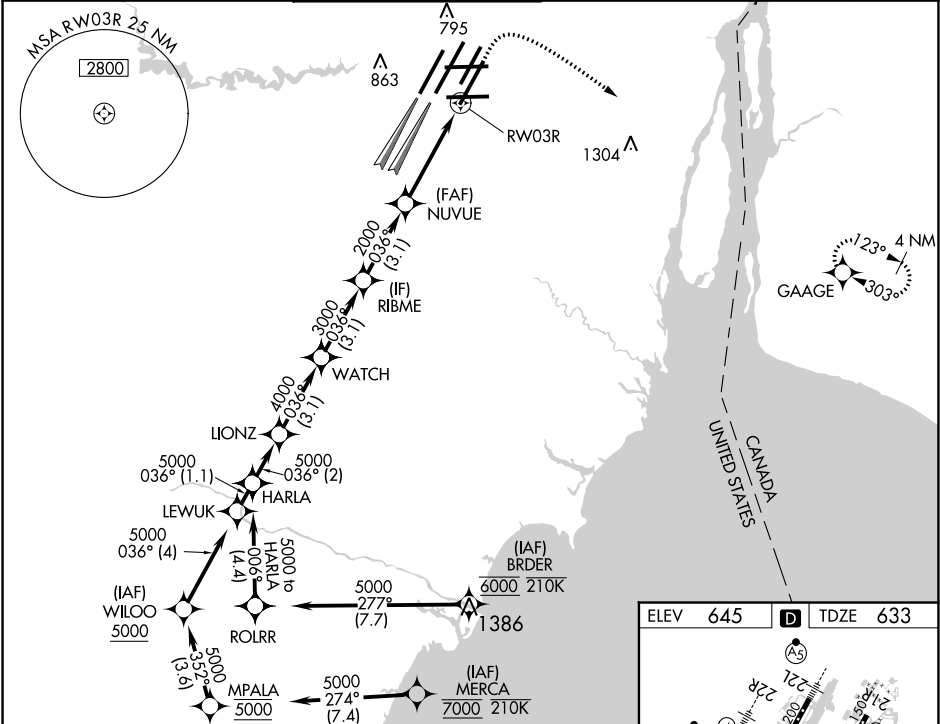
RNP APCH.

For uncompensated Baro-VNAV systems, LNAV/VNAV NA below -19°C (-2°F) or above 54°C (130°F). Simultaneous approach authorized.  
LNAV procedure NA during simultaneous operations. Use of FD or AP required during simultaneous operations.

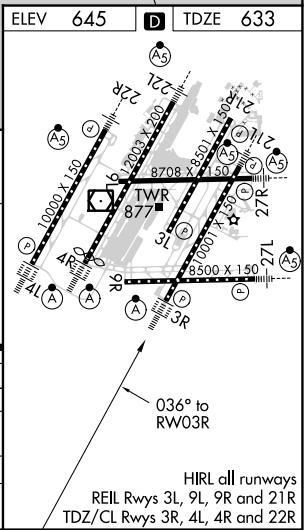
ALSF-2

MISSED APPROACH: Climb to 1100 then climbing right turn to 4000 direct GAAGE and hold, continue climb-in-hold to 4000.

D-ATIS <b>133.675</b>	DETROIT APP CON <b>125.15 284.0</b>	METRO TOWER <b>118.4 317.725</b>	GND CON <b>121.8 (NW) 119.45 (NE)</b> <b>132.725 (SW) 119.25 (SE)</b>	CLNC DEL <b>120.65</b>	CPDLC
--------------------------	--	-------------------------------------	---	---------------------------	-------



VGSI and RNAV glidepath not coincident (VGSI Angle 3.00/TCH 70).				
<div><div>HARLA</div><div>LIONZ</div><div>WATCH</div><div>RIBME</div><div>NUVUE</div><div>5000-036°</div><div>5000</div><div>4000</div><div>3000</div><div>2000</div><div>GP 3.00° TCH 54</div><div>2 NM</div><div>3.1 NM</div><div>3.1 NM</div><div>3.1 NM</div><div>2.9 NM</div><div>1.2</div></div>				
CATEGORY	A	B	C	D
LPV DA	833/18		200 (200-½)	
LNAV/VNAV DA	1013/35		380 (400-¾)	
LNAV MDA	1080/24	447 (500-½)	1080/45	447 (500-¾)
CIRCLING	1180-1	535 (600-1)	1180-1½	1240-2
			535 (600-1½)	595 (600-2)



EC-1, 31 DEC 2020 to 28 JAN 2021

EC-1, 31 DEC 2020 to 28 JAN 2021