

TOP ALTITUDE:
17000

D-ATIS 118.125
CLNC DEL 120.65
CPDLC

GND CON

121.8 (NW) 119.45 (NE)
132.725 (SW) 119.25 (SE)

METRO TOWER

118.4 317.725 (R_{wys} 3L/R, 21L/R, 27R)128.75 317.725 (R_w 27L)

135.0 317.725 (Rwy 4L/R, 22L/R)

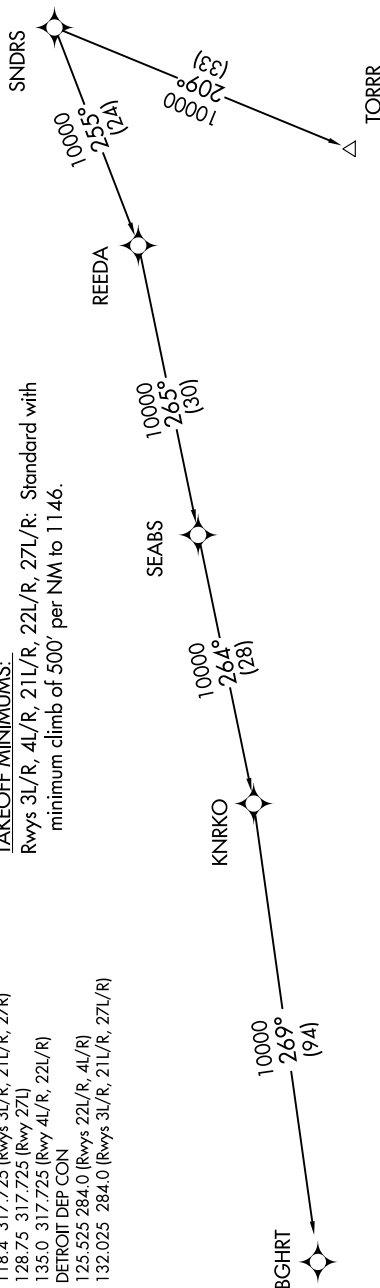
DETROIT DEP CON

125.525 284.0 (R_{WVS} 221/R 41/R)

132.025 284.0 (Rwvs 3L/R. 21L/R. 27L/R)

TAKEOFF MINIMUMS:

Rwys 3L/R, 4L/R, 21L/R, 22L/R, 27L/R: Standard with minimum climb of 500' per NM to 1146.



NOTE: RNAV 1:

NOTE: RADAR required.

NOTE: DME/DME/IRU or GPS required.

NOTE: Turbojet departures at/above 10000, maintain 280K until advised by ATC.

NOTE: TORRR TRANSITION: For use by KIND and KCVG area arrivals only and flights filed at or below FL220, or as assigned by ATC.

NOTE: If unable to accept 500' per NM climb rate, advise clearance delivery on initial contact.

NOTE: Chart not to scale.

(NARRATIVE ON FOLLOWING PAGE)

EC-1, 31 DEC 2020 to 28 JAN 2021

(SNDRS2.SNDRS) 15AUG19

DETROIT METROPOLITAN WAYNE COUNTY (DTW)