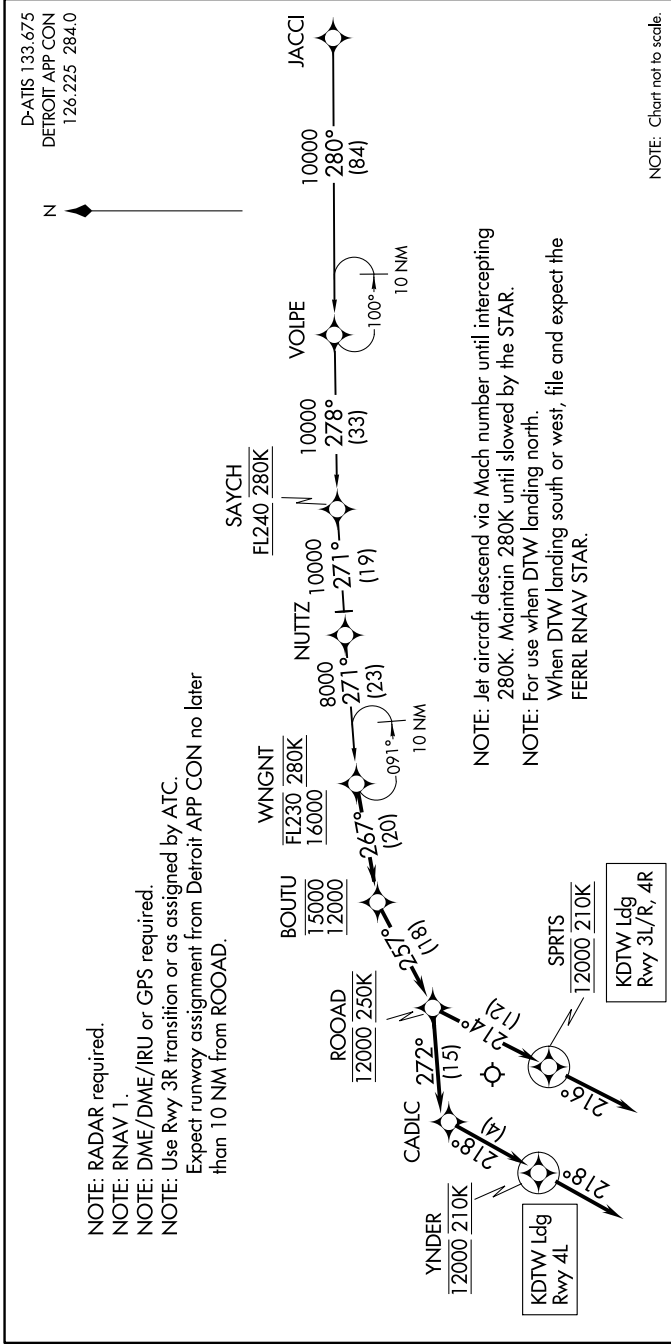


WNGNT TWO ARRIVAL (RNAV)



ARRIVAL ROUTE DESCRIPTION

JACCI TRANSITION (JACCI.WNGNT2)

From WNGNT on track 267° to cross BOUTU between 12000 and 15000, then on track 257° to cross ROOAD at 12000 and at 250K. LANDING RUNWAYS 3L/R, 4R: From ROOAD on track 214° to cross SPRTS at 12000 and at 210K, then on track 216°. Expect RADAR vectors to final approach course.
LANDING RUNWAY 4L: From ROOAD on track 272° to CADIC, then on track 218° to cross YNDER at 12000 and at 210K, then on track 218°. Expect RADAR vectors to final approach course.

WNGNT TWO ARRIVAL (RNAV)