

ZETTR THREE DEPARTURE (RNAV) Departure Routes

DETROIT METROPOLITAN WAYNE COUNTY (DTW)

DETROIT, MICHIGAN

D-ATIS 118.125
CLINC DEL 120.65
CPDLC
GND CON
121.8 (NW) 119.45 (NE)
132.725 (SW) 119.25 (SE)
METRO TOWER
118.4 317.725 (Rwys 3L/R, 21L/R, 27R)
128.75 317.725 (Rwy 27L)
135.0 317.725 (Rwy 4L/R, 22L/R)
DETROIT DEP CON
125.525 284.0 (Rwys 22L/R, 27L/R)
132.025 284.0 (Rwys 3L/R, 4L/R, Rwy 21L/R)

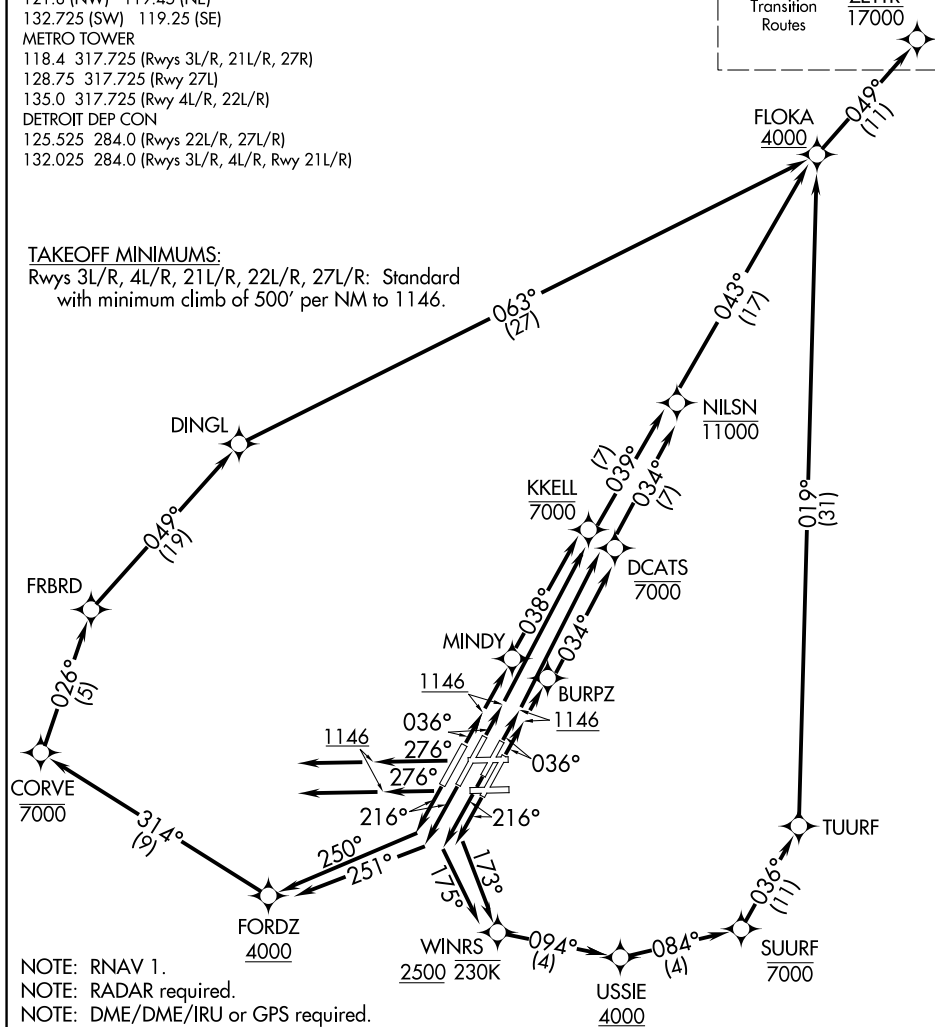
TOP ALTITUDE:
17000

See following
page for
Transition
Routes

ZETTR
17000

TAKEOFF MINIMUMS:

Rwys 3L/R, 4L/R, 21L/R, 22L/R, 27L/R: Standard with minimum climb of 500' per NM to 1146.



NOTE: RNAV 1. 4000 2500 2300
NOTE: RADAR required.
NOTE: DME/DME/IRU or GPS required.
NOTE: Turbojet departures at/above
10000, maintain 280K until
advised by ATC.
NOTE: TANKO TRANSITION: For use by CYYZ area
arrivals only, or as assigned by ATC.
NOTE: If unable to accept 500' per NM climb rate,
advise clearance delivery on initial contact.

NOTE: Chart not to scale.

(CONTINUED ON FOLLOWING PAGE)

ZETTR THREE DEPARTURE (RNAV) Departure Routes

DETROIT, MICHIGAN

(ZETTR3.ZETTR) 05DEC19

DETROIT METROPOLITAN WAYNE COUNTY (DTW)

EC-1, 31 DEC 2020 to 28 JAN 2021

EC-1, 31 DEC 2020 to 28 JAN 2021