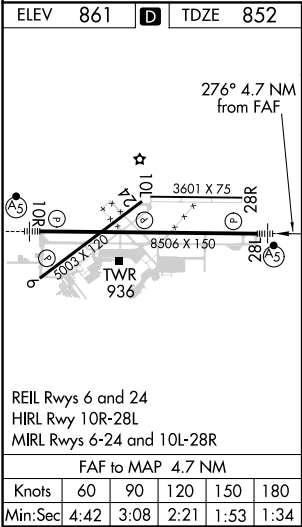
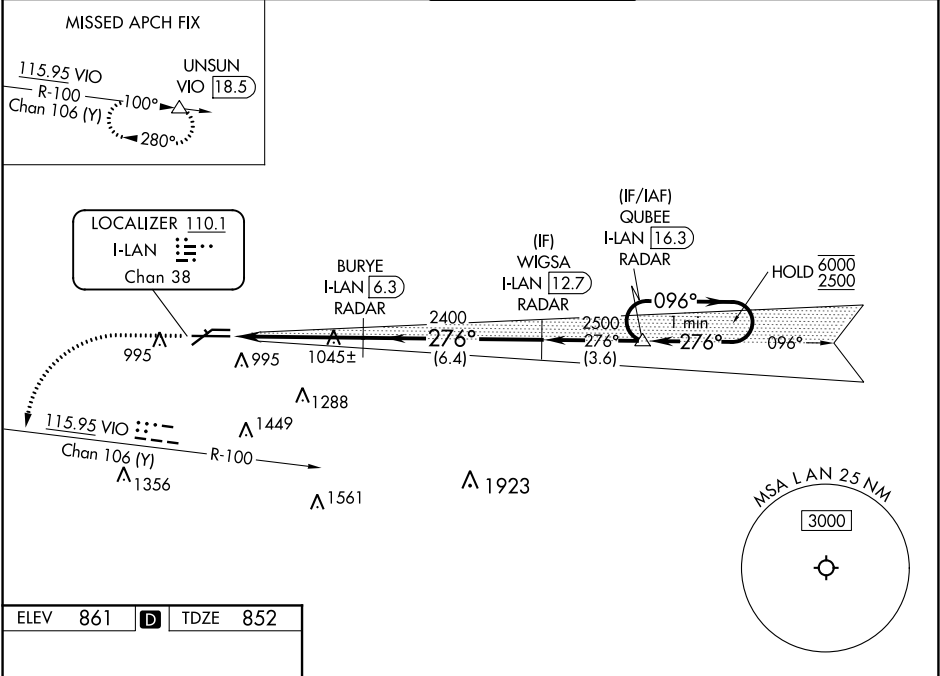


LOC/DME I-LAN <b>110.1</b> Chan <b>38</b>	APP CRS <b>276°</b>	Rwy ldg <b>8506</b> TDZE <b>852</b> Apt Elev <b>861</b>
---	------------------------	---

ILS or LOC RWY 28L  
CAPITAL REGION INTL (LAN)

DME required. RADAR required for procedure entry.		MALSR 	MISSED APPROACH: Climb to 2500 then climbing left turn to 3000 on VIO VOR/DME R-100 to UNSUN/VIO 18.5 DME and hold.	
** RVR 1800 authorized with use of FD or AP or HUD to DA.				

ATIS <b>119.75</b>	GREAT LAKES APP CON * <b>118.65 226.4</b>	LANSING TOWER <b>119.9 240.9</b>	GND CON <b>121.9</b>	CLNC DEL <b>123.675</b>
-----------------------	--	-------------------------------------	-------------------------	----------------------------



2500 ↑	3000 ↙	VIO R-100	UNSUB △	One Minute Holding Pattern			
*LOC only		BURYE I-LAN [6.3] RADAR		WIGSA I-LAN [12.7] RADAR	QUBEE I-LAN [16.3] RADAR		
*I-LAN [2.8]		2400		2500		096° → 6000 ← 276° 2500	
I-LAN [1.6]		2400		2500		GS 3.00° TCH 53	
1.3		3.4 NM		6.4 NM		3.6 NM	
CATEGORY	A		B		C	D	
S-ILS 28L **	1052/24 200 (200-½)						
S-LOC 28L	1300/24 448 (500-½)				1300/45 448 (500-¾)		
CIRCLING	1380-1 519 (600-1)				1600-2 739 (800-2)	1760-3 899 (900-3)	

EC-1, 31 DEC 2020 to 28 JAN 2021

EC-1, 31 DEC 2020 to 28 JAN 2021