

HI-TACAN RWY 19

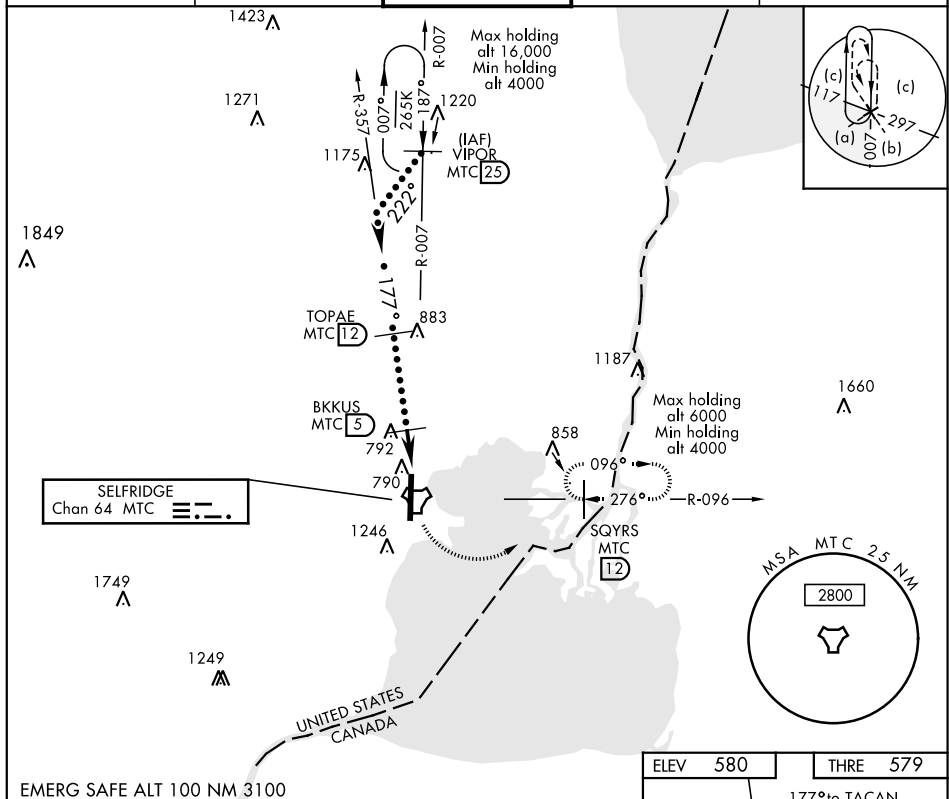
TACAN Chan 64	APCH CRS 177°	Rwy Idg 9000 THRE 579 Arpt Elev 580	JAL-276 [USAF]	SELF RIDGE ANGB (KMTCT)
-------------------------	-------------------------	--	----------------	-------------------------

T * When ALS inop, increase vis to 1½ miles.
 ** Circling not authorized W of Rwy 1-19.



MISSED APPROACH: Climbing left turn to 4000, intercept MTC R-096 to SQYRS and hold, continue climb-in-hold to 4000.

ATIS 125.325 270.1	SELFRIDGE APP CON 119.6 318.2	SELFRIDGE TOWER ★ 120.15 (CTAF) 0 225.4	GND CON 128.3 275.8	CLNC DEL 128.3 275.8
-----------------------	----------------------------------	--	------------------------	-------------------------



<p>VIPOR R-007 MTC (25) 10,000 222° R-357 TOPAE (12) BKKUS (5) 2800 177° 1900 2.3 SOMPE (0.9) TACAN 4.1 NM 4000 MTC R-096 SQYRS</p>			
CATEGORY	C	D	E
S-19*	1100/55		521 (600-1)
CIRCLING**	1120-1½ 541 (600-1½)	1140-2	561 (600-2)

