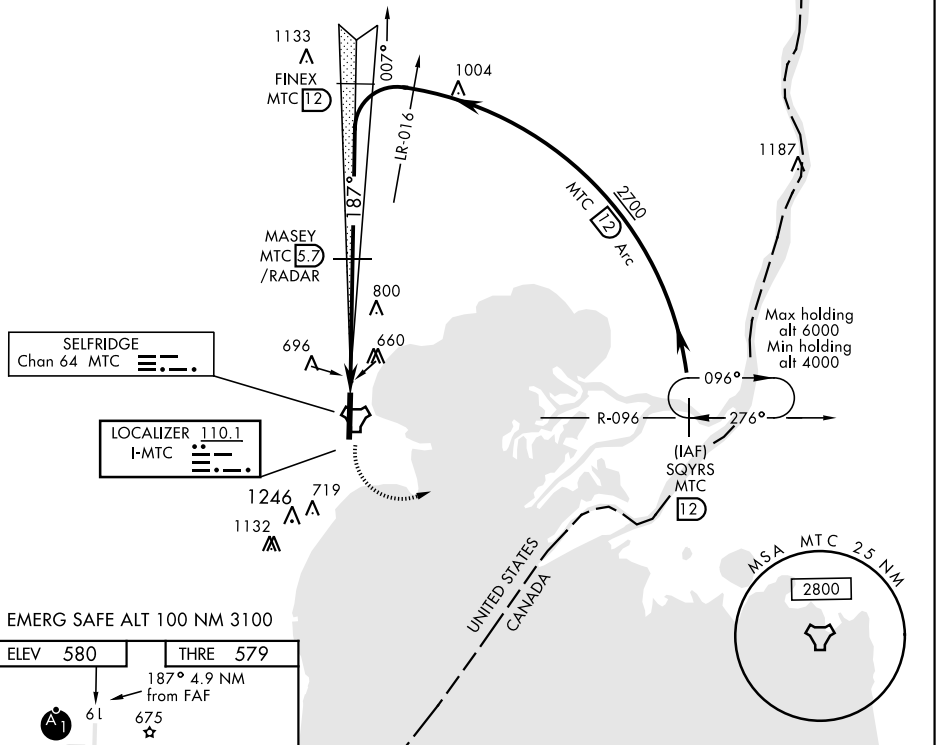


MT. CLEMENS, MICHIGAN

ILS or LOC/DME RWY 19

LOC I-MTC <b>110.1</b>	APCH CRS <b>187°</b>	Rwy ldg THRE Arpt Elev <b>9000</b> <b>579</b> <b>580</b>	AL-276 [USAF]	SELFRIEDGE ANGB (KMTC)
* When ALS inop, increase RVR to 55, vis to 1 mile. ** When ALS inop, increase CAT AB RVR to 55, vis to 1 mile, CAT CDE vis to 1½ miles.			ALSF-1	MISSED APPROACH: Climbing left turn to 4000, intercept MTC R-096 to SQYRS and hold, continue climb-in-hold to 4000.
ATIS <b>125.325 270.1</b>	SELFRIEDGE APP CON <b>119.6 318.2</b>	SELFRIEDGE TOWER ★ <b>120.15 (CTAF) 0 225.4</b>	GND CON <b>128.3 275.8</b>	CLNC DEL <b>128.3 275.8</b>

\*\*\* Circling not authorized W of Rwy 1-19.



EMERG SAFE ALT 100 NM 3100

ELEV 580	THRE 579
187° 4.9 NM from FAF	
HIRL Rwy 1-19	
REIL Rwy 1-19	
TWR 681	
FAF to MAP 4.9 NM	
Knots	60 90 120 150 180
Min:Sec	4:54 3:16 2:27 1:58 1:38

4000	MTC R-096	SQYRS	MASEY 5.7 /RADAR	Intcp Lczr FINEX 12	SQYRS R-096 12
2200	2200	2700	187°	12 Arc	4000
TACH 51					
CATEGORY	A	B	C	D	E
S-ILS 19*	923/40		344	(400-¾)	
S-LOC 19**	1080/40	501 (600-¾)	1080/55	501 (600-1)	
CIRCLING ***	1120-1	541 (600-1)	1120-1½	541 (600-1½)	1140-2 561 (600-2)

MT. CLEMENS, MICHIGAN

42°36'N-82°50'W

SELFRIEDGE ANGB (KMTC)

Amtd 3 23AUG12

ILS or LOC/DME RWY 19

EC-1, 31 DEC 2020 to 28 JAN 2021

EC-1, 31 DEC 2020 to 28 JAN 2021