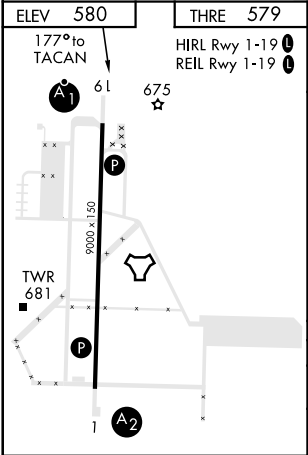
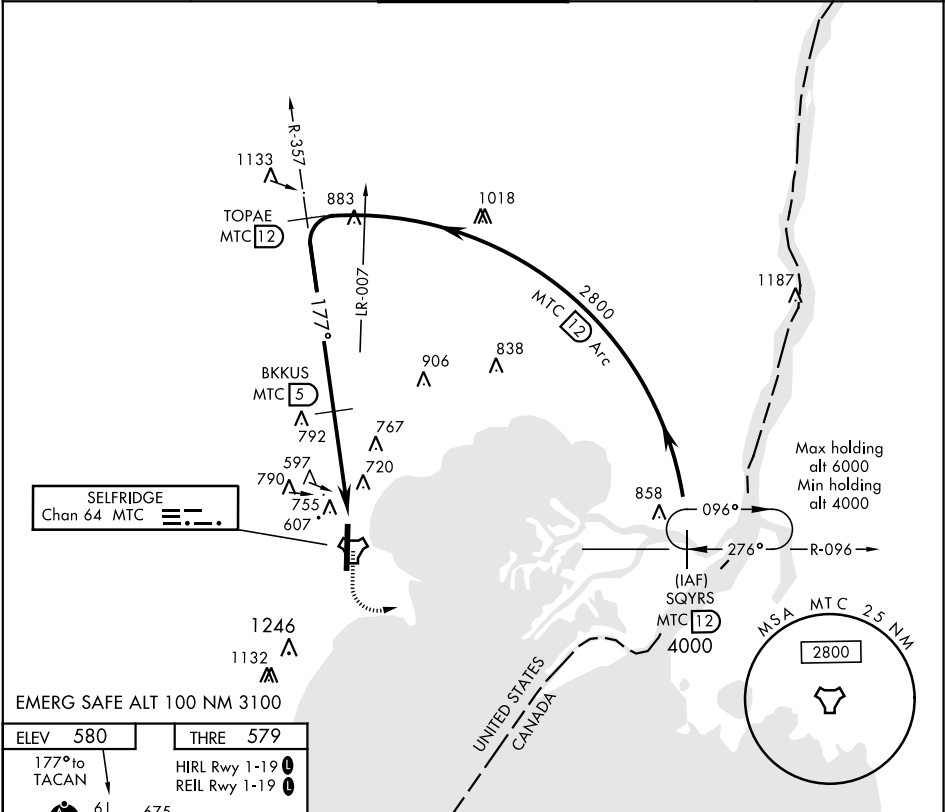


MT. CLEMENS, MICHIGAN

TACAN RWY 19

TACAN MTC Chan 64	APCH CRS 177°	Rwy ldg THRE 579 Arprt Elev 580	AL-276 [USAF]	SELFDRIDGE ANGB (KMTC)
▼ * When ALS inop, increase CAT AB RVR to 55, vis to 1 mile, CAT CDE vis to 1½ miles. ** Circling not authorized W of Rwy 1-19.			ALSF-1 	MISSED APPROACH: Climbing left turn to 4000, intercept MTC R-096 to SQYRS and hold, continue climb-in-hold to 4000.
ATIS 125.325 270.1	SELFDRIDGE APP CON 119.6 318.2	SELFDRIDGE TOWER ★ 120.15 (CTAF) 225.4	GND CON 128.3 275.8	CLNC DEL 128.3 275.8



SQYRS R-096 4000		TOPAE R-357 2800	BKKUS 5		SOMPE 2.3	TACAN 0.9
4000		2800	1900		4.1 NM	.1
12 Arc		12 Arc	12 Arc		12 Arc	
CATEGORY	A	B	C	D	E	
S-19 *	1100/40	521 (600-¾)	1100/55	521 (600-1)		
CIRCLING **	1120-1	541 (600-1)	1120-1½ 541 (600-1½)	1140-2	561 (600-2)	

MT. CLEMENS, MICHIGAN
Amdt 3 23AUG12

42°36'N-82°50'W

SELFDRIDGE ANGB (KMTC)

TACAN RWY 19