

WAAS CH 69410 W14A	APP CRS 141°	Rwy Idg TDZE Apt Elev	6100 627 629
--	------------------------	-----------------------------	---

RNAV (GPS) RWY 14

MUSKEGON COUNTY (MKG)

RNP APCH.

▼

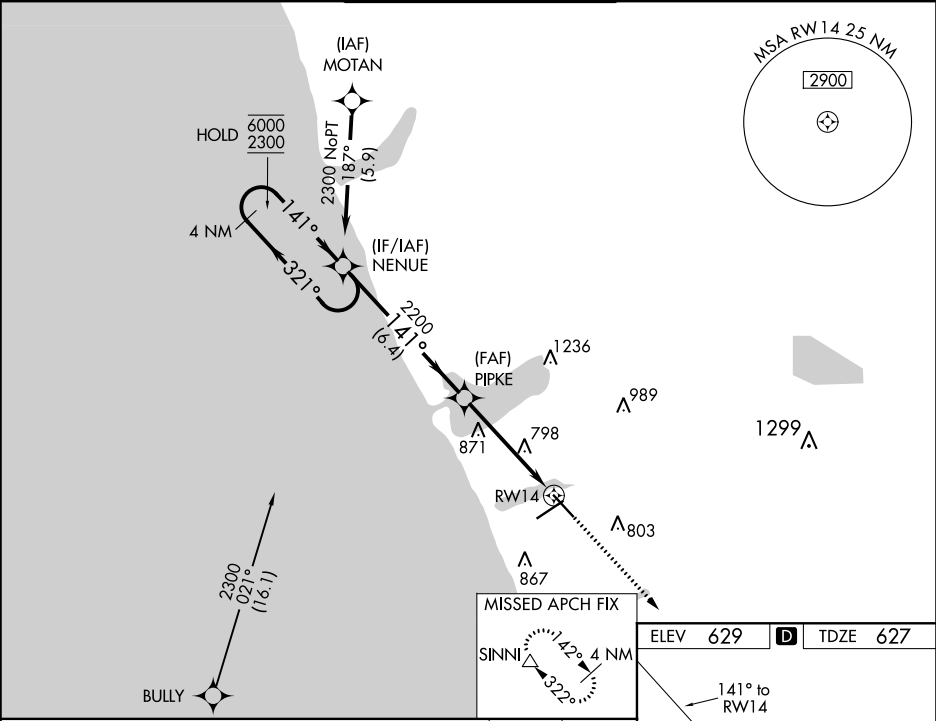
▲

ASR

For uncompensated Baro-VNAV systems, LNAV/VNAV NA below -18°C or above 54°C.

MISSED APPROACH:
Climb to 2700 direct SINNI and hold.

ATIS 124.3	GREAT LAKES APP CON ★ 119.8 290.35 (North) 133.825 290.35 (South)	MUSKEGON TOWER ★ 126.25 (CTAF) 0 343.725	GND CON 121.6	UNICOM 122.95
----------------------	---	---	-------------------------	-------------------------



4 NM Holding Pattern

6000
2300

←321°
141°→

GP 3.00°
TCH 45

NENUE

PIPKE

2200

2200

2700 SINNI

*1.6 NM to RW14 *LNAV only

RW14

6.4 NM 3.1 NM 1.6

CATEGORY	A	B	C	D
LPV DA	877-¾ 250 (300-¾)			
LNAV/VNAV DA	1079-1½ 452 (500-1½)			
LNAV MDA	1180-1 553 (600-1)	1180-1½ 553 (600-1½)	1180-1¾ 553 (600-1¾)	
CIRCLING	1180-1 551 (600-1)	1200-1½ 571 (600-1½)	1200-2 571 (600-2)	

ELEV 629 D TDZE 627

141° to RW14

REIL Rwy 6
REIL Rwy 14
HIRL Rwy 6-24
HIRL Rwy 14-32