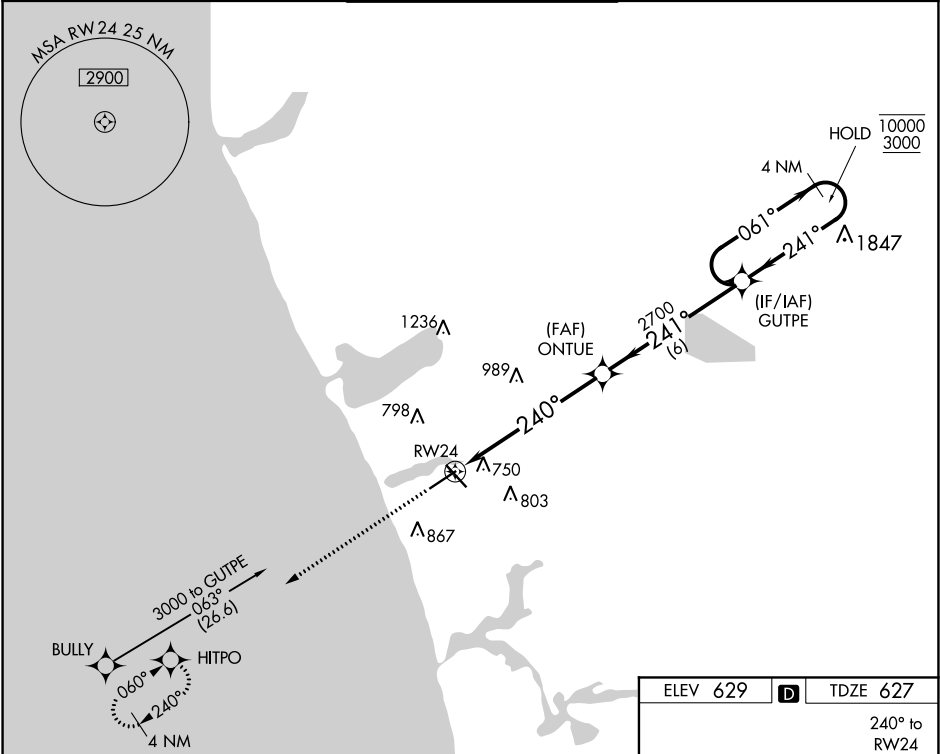


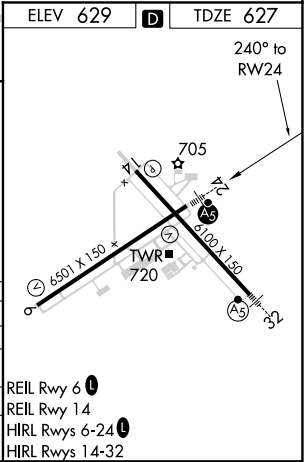
WAAS CH <b>42918</b> <b>W24A</b>	APP CRS <b>240°</b>	Rwy Idg TDZE Apt Elev	<b>6501</b> <b>627</b> <b>629</b>
--	------------------------	-----------------------------	---

RNAV (GPS) RWY 24  
MUSKEGON COUNTY (MKG)

RNP APCH. For uncompensated Baro-VNAV systems, LNAV/VNAV NA below -18°C or above 54°C. For inop ALS, increase LPV visibility all Cats to 3/4 SM, LNAV/VNAV visibility all Cats to 1 3/4 SM, LNAV Cats A/B to 1 SM and LNAV Cats C/D to 1 1/2 SM.		MALSRR 	MISSED APPROACH: Climb to 3000 direct HITPO and hold.	
ATIS <b>124.3</b>	GREAT LAKES APP CON★ <b>119.8 290.35</b> (North) <b>133.825 290.35</b> (South)	MUSKEGON TOWER★ <b>126.25</b> (CTAF) <b>0 343.725</b>	GND CON <b>121.6</b>	UNICOM <b>122.95</b>



3000	HITPO	*LNAV only	ONTUE	GUTPE	4 NM Holding Pattern
↑		*1.2 NM to RW24	2700	241°	10000 3000
				240°	GP 3.00° TCH 56
CATEGORY	A	B	C	D	
LPV DA		827-1/2	200 (200-1/2)		
LNAV/VNAV DA		1092-1	465 (500-1)		
LNAV MDA	1080-1/2	453 (500-1/2)	1080-7/8	453 (500-7/8)	
CIRCLING	1080-1 451 (500-1)	1180-1 551 (600-1)	1200-1 1/2 571 (600-1 1/2)	1200-2 571 (600-2)	



EC-1, 31 DEC 2020 to 28 JAN 2021

EC-1, 31 DEC 2020 to 28 JAN 2021