

WAAS CH 63010 W32A	APP CRS 321°	Rwy Idg 6100 TDZE 629 Apt Elev 629
--	------------------------	---

RNAV (GPS) RWY 32

MUSKEGON COUNTY (MKG)

RNP APCH.

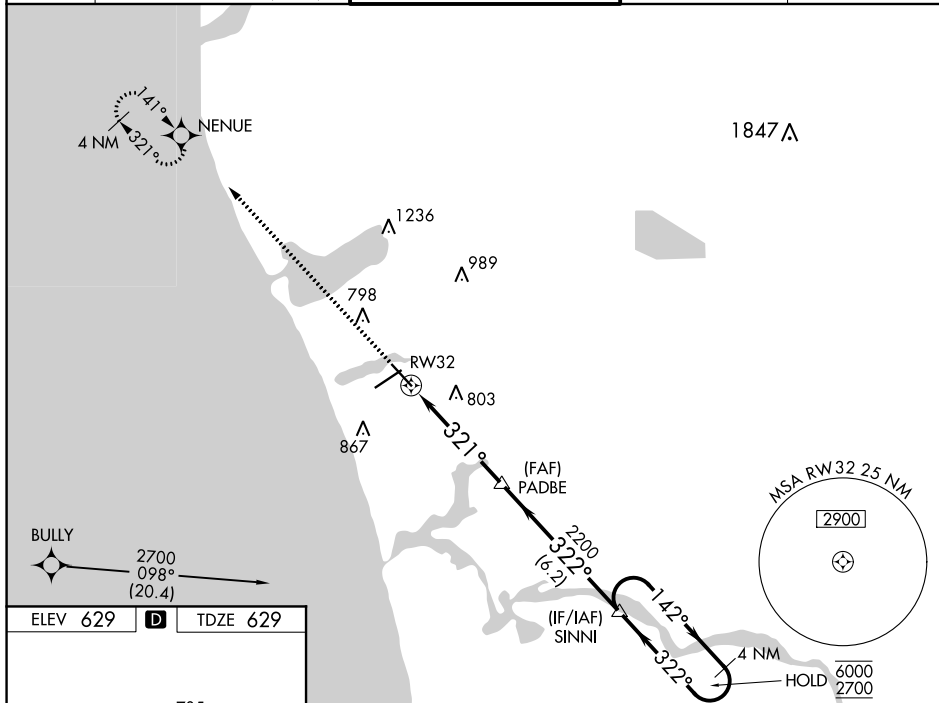
⚠ For uncompensated Baro-VNAV systems, LNAV/VNAV NA below -18°C or above 54°C.
ASR For inop ALS, increase LPV visibility all Cats to RVR 4000, LNAV/VNAV visibility all Cats to RVR 450, and LNAV visibility Cats A/B to RVR 5500 and Cats C/D to 1½ SM.
 ** RVR 1800 authorized with use of FD or AP or HUD to DA, NA when using Fremont
 altimeter setting.

MALSR

MISSED APPROACH:
Climb to 2300 direct
NENUE and hold.

ATIS 124.3	GREAT LAKES APP 119.8 290.35 133.825 290.35	CON ★ (North) (South)	MUSKEGON TOWER ★ 126.25 (CTAF) 0 343.725	GND CON 121.6	UNICOM 122.95
---------------	---	-----------------------------	---	------------------	------------------



REIL Rwy 6 **L**
REIL Rwy 14
HIRL Rwys 6-24 **L**
HIRL Rwys 14-32

MUSKEGON, MICHIGAN
Amdt 2D 05NOV20

43°10'N-86°14'W

MUSKEGON COUNTY (MKG)
RNAV (GPS) RWY 32