

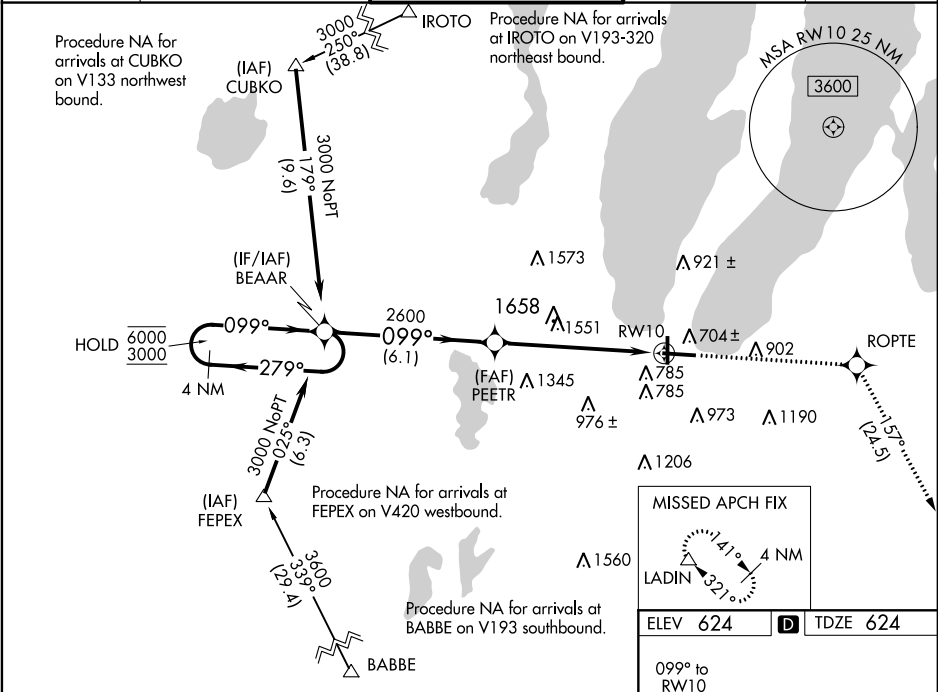
WAAS CH <b>42610</b> <b>W10A</b>	APP CRS <b>099°</b>	Rwy Idg TDZE <b>7016</b> <b>624</b> Apt Elev <b>624</b>
--	------------------------	--

RNAV (GPS) RWY 10

CHERRY CAPITAL (TV'C)

RNP APCH.	For uncompensated Baro-VNAV systems, LNAV/VNAV NA below -19°C (-2°F) or above 54°C (130°F). Rwy 10 helicopter visibility reduction below ¾ SM NA. For inop ALS, increase LPV visibility all Cats ½ SM. Inop table does not apply to LNAV/VNAV all Cats and LNAV Cats C/D.	MALSR 	MISSED APPROACH: Climb to 4000 direct ROPTe and on track 157° to LADIN and hold.
-----------	---	-----------	--

ATIS <b>119.175</b>	MINNEAPOLIS CENTER <b>132.9 338.3</b>	TRAVERSE CITY TOWER* <b>124.2 (CTAF) 0 348.6</b>	GND CON <b>121.8 348.6</b>	UNICOM <b>122.95</b>
------------------------	--	---	-------------------------------	-------------------------



4 NM Holding Pattern	BEAAR	PEETR	4000	ROPTe	tr 157°	LADIN
6000 3000	279° 099°	2600				
GP 3.00° TCH 52						
	6.1 NM	2.6 NM	3.4 NM			
CATEGORY	A	B	C	D		
LPV DA		909-¾	285 (300-¾)			
LNAV/VNAV DA		1983-5	1359 (1400-5)			
LNAV MDA	1780-¾ 1156 (1200-¾)	1780-1 1156 (1200-1)	1780-3	1156 (1200-3)		
CIRCLING	1780-1¼ 1156 (1200-1¼)	1780-1½ 1156 (1200-1½)	1780-3	1156 (1200-3)		

