

WAAS CH <b>90335</b> <b>W18A</b>	APP CRS <b>185°</b>	Rwy Idg <b>4838</b> TDZE <b>622</b> Apt Elev <b>624</b>
--	------------------------	---

RNAV (GPS) RWY 18

CHERRY CAPITAL (TV'C)

⚠

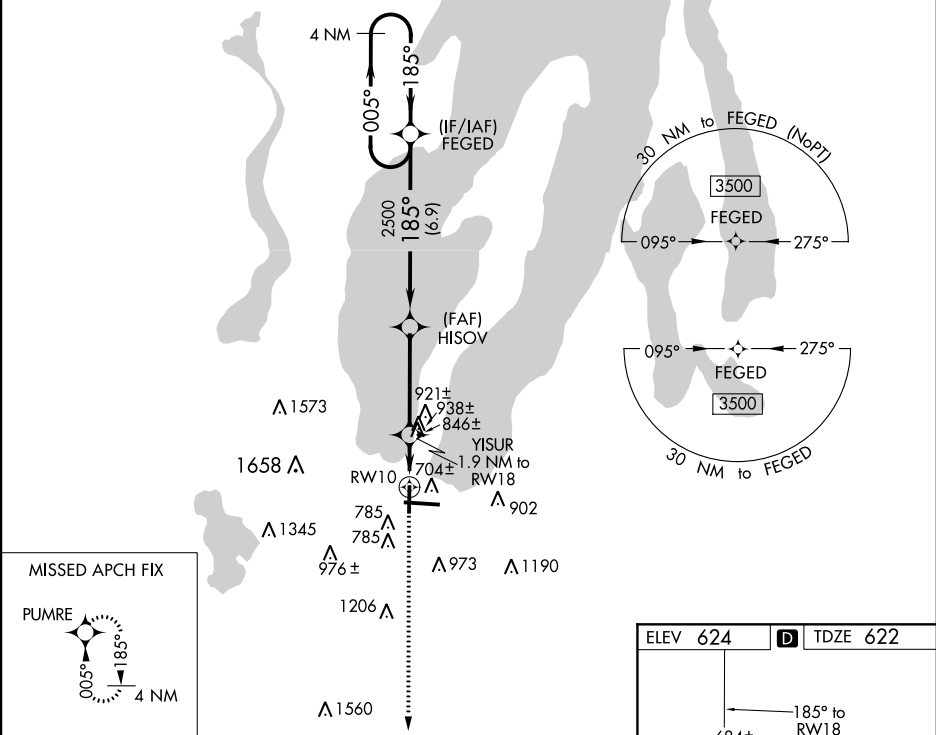
⚠

❄ -20°C

DME/DME RNP-0.3 NA. Helicopter visibility reduction below 1 SM NA. Rwy 18 Straight-in and Circling minimums NA at night. When local altimeter setting not received, use Bellaire altimeter setting and increase all MDA 60 feet, increase LP Cat C and D visibility ¼ mile, LNAV Cat C and D visibility ½ mile, and Circling Cat C visibility ¼ mile.

MISSED APPROACH:  
Climb to 3000 direct PUMRE and hold.

ATIS <b>119.175</b>	MINNEAPOLIS CENTER <b>132.9 338.3</b>	TRAVERSE CITY TOWER★ <b>124.2 (CTAF) 0 348.6</b>	GND CON <b>121.8 348.6</b>	UNICOM <b>122.95</b>
------------------------	--	---	-------------------------------	-------------------------



Visual Segment - Obstacles.				
4 NM Holding Pattern				
3500 ← 005° → 185° → 185° → 2500 → 1260 → RWY 18				
6.9 NM      3.9 NM      1.9 NM				
CATEGORY	A	B	C	D
LP MDA	1100-1	478 (500-1)	1100-1⅜	478 (500-1⅜)
LNAV MDA	1200-1	578 (600-1)	1200-1¾	578 (600-1¾)
Ⓢ CIRCLING	1200-1 576 (600-1)	1260-1 636 (700-1)	1500-2½ 876 (900-2½)	1720-3 1096 (1100-3)

