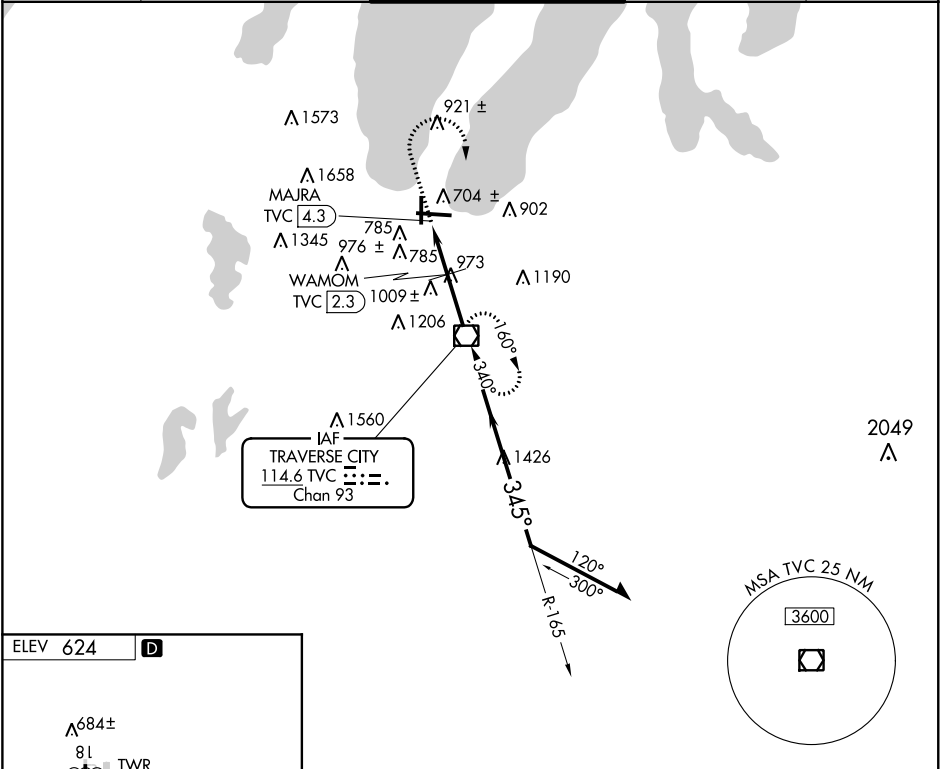


VOR/DME TVC 114.6 Chan 93	APP CRS 345°	Rwy Idg TDZE Apt Elev N/A N/A 624	VOR-A CHERRY CAPITAL (TVC)
---	------------------------	---	--------------------------------------

<div><div>▼</div><div>▲</div><div>❄</div></div> <div>When local altimeter setting not received, use Bellaire altimeter setting and increase all MDA 60 feet and all Cat C visibility ¼ mile. Circling to Rwy 18 NA at night.</div>			MISSED APPROACH: Climb to 1800 then climbing right turn to 3000 direct TVC VOR/DME and hold.	
ATIS 119.175	MINNEAPOLIS CENTER 132.9 338.3	TRAVERSE CITY TOWER ★ 124.2 (CTAF) 0 348.6	GND CON 121.8 348.6	UNICOM 122.95



ELEV 624

D

81

5378

794±

706

675±

736

36

705±

7016 X 150

345° 4.3 NM from FAF

HIRL Rwy 10-28

MIRL Rwy 18-36

REIL Rwy 36

1800

3000

TVC

WAMOM TVC 2.3

MAJRA TVC 4.3

1440

2200

3000

165°

345°

Remain within 10 NM

*1500 when using Bellaire altimeter setting.

CATEGORY	A	B	C	D
CIRCLING	1440-1¼	816 (900-1¼)	1500-2½ 876 (900-2½)	1720-3 1096 (1100-3)
WAMOM FIX MINIMUMS (DME REQUIRED)				
CIRCLING	1300-1	676 (700-1)	1500-2½ 876 (900-2½)	1720-3 1096 (1100-3)