

LOC/DME I-LSW	APP CRS	Rwy Idg	23R	23L
109.5	233°	TDZE	5596	7543
Chan 32		Apt Elev	712	710
			716	716

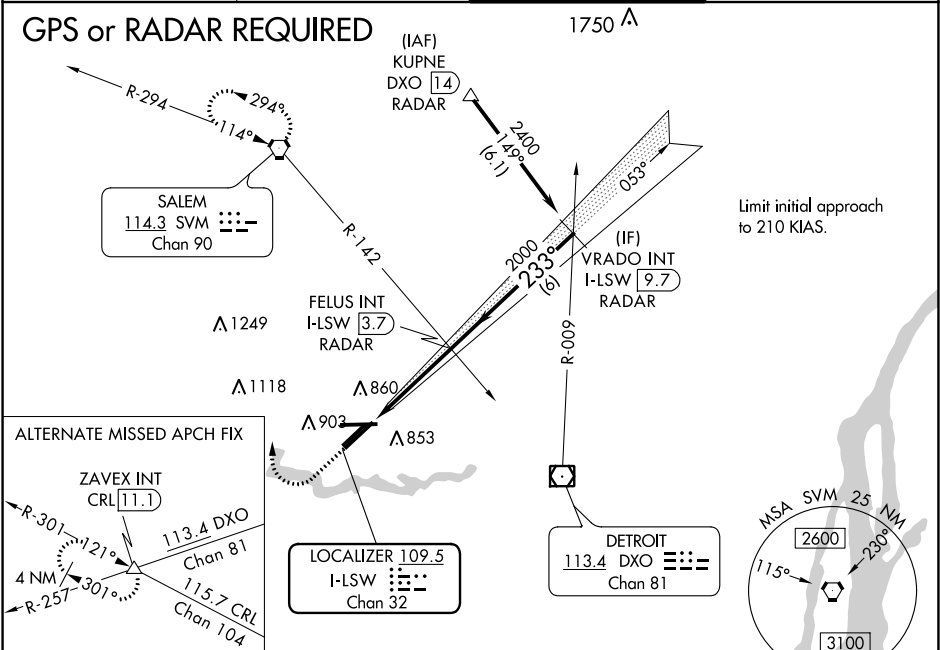
ILS or LOC RWY 23L
WILLOW RUN (YIP)

⚠ Inoperative table does not apply to S-ILS 23L.
⚠ For inoperative MALSR, increase S-LOC 23L Cat A/B visibility to 1 mile.
Helicopter visibility reduction below ¾ SM NA.

MALSR

MISSED APPROACH: Climb to 1400 then dimbing right turn to 3000 direct SVM VORTAC and hold.

ATIS 127.425	DETROIT APP CON 118.95 284.0	WILLOW RUN TOWER 125.275 256.9	GND CON 119.975
------------------------	--	--	---------------------------



ELEV 716 **D** TDZE 23L 710
TDZE 23R 712

233° 3.9 NM from FAF 767±

771, 742, 815, 792, 789±
TWR 804
5995 X 160, 7292 X 160, 7543 X 150
5L, 5R, 23L, 23R

TDZ/CL Rwy 5R
HIRL Rwy 5R-23L
MIRL Rwy 5L-23R, and 9-27

FAF to MAP 3.9 NM

Knots	60	90	120	150	180
Min:Sec	3:54	2:36	1:57	1:34	1:18

1400	3000	SVM	Use I-LSW DME when on the LOC course.	VRADO INT I-LSW 9.7 RADAR
*LOC only.				
*I-LSW 1				
1.2 NM 2.7 NM 6 NM				
CATEGORY	A	B	C	D
S-ILS 23L	960-¾ 250 (300-¾)			
S-LOC 23L	1140-¾ 430 (500-¾)			
SIDESTEP RWY 23R	1140-1 428 (500-1)		1140-1½ 428 (500-1½)	1140-2 428 (500-2)
CIRCLING	1220-1 504 (600-1)		1220-1½ 504 (600-1½)	1400-2¼ 684 (700-2¼)

EC-1, 31 DEC 2020 to 28 JAN 2021

EC-1, 31 DEC 2020 to 28 JAN 2021