
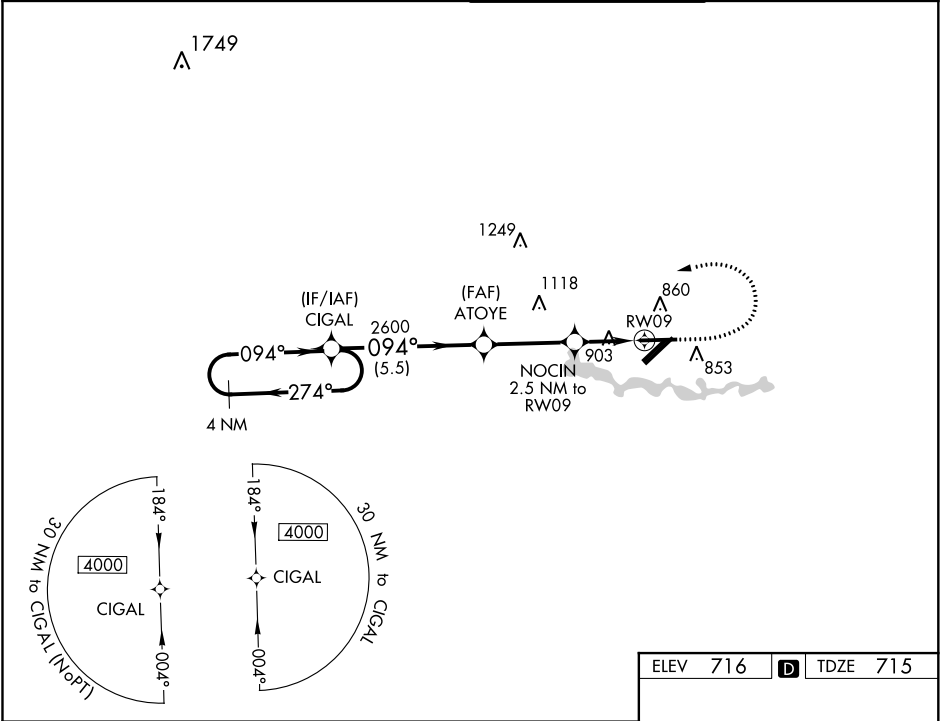




WAAS CH 73035 W09A	APP CRS 094°	Rwy Idg TDZE 715 Apt Elev 716	6716
--	------------------------	---	-------------

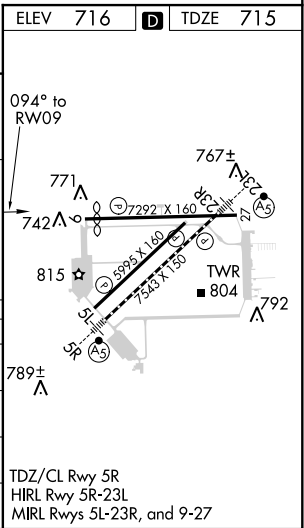
RNAV (GPS) RWY 9
WILLOW RUN (YIP)

 DME/DME RNP-0.3 NA. Helicopter visibility reduction below 1 SM NA. For uncompensated Baro-VNAV systems, LNAV/VNAV NA below -19°C (-2°F) or above 54°C (130°F).	MISSED APPROACH: Climb to 1900 then climbing left turn to 4000 direct CIGAL and hold.
--	---

ATIS 127.425	DETROIT APP CON 118.95 284.0	WILLOW RUN TOWER 125.275 256.9	GND CON 119.975
------------------------	--	--	---------------------------



4 NM Holding Pattern CIGAL				
				
GP 3.00° TCH 50				
5.5 NM 3.3 NM 2.5 NM				
CATEGORY	A	B	C	D
LPV DA	965-1 250 (300-1)			
LNAV/VNAV DA	1197-1½ 482 (500-1½)			
LNAV MDA	1160-1 445 (500-1)	1160-1¾ 445 (500-1¾)		
 CIRCLING	1220-1 504 (600-1)	1220-1½ 504 (600-1½)	1400-2¼ 684 (700-2¼)	



EC-1, 31 DEC 2020 to 28 JAN 2021

EC-1, 31 DEC 2020 to 28 JAN 2021