

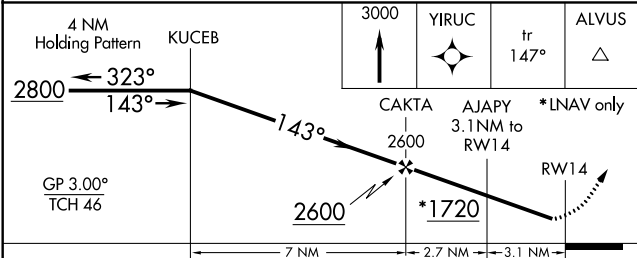
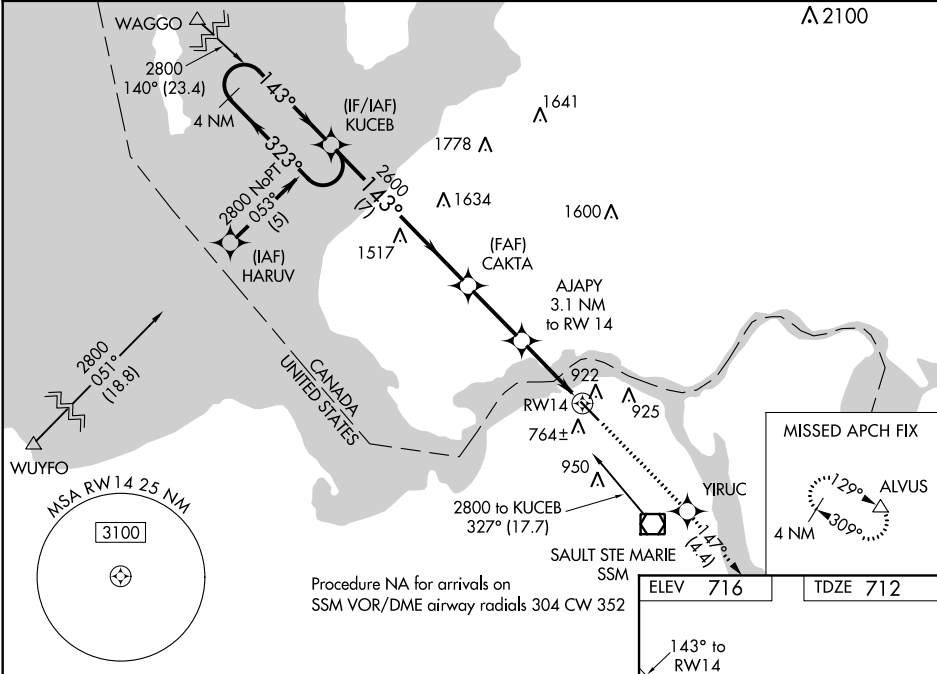
WAAS CH <b>70622</b> <b>W14A</b>	APP CRS <b>143°</b>	Rwy Idg TDZE Apt Elev <b>5054</b> <b>712</b> <b>716</b>
--	------------------------	--

RNAV (GPS) RWY 14

SAULT STE MARIE MUNI/SANDERSON FIELD (A/NJ)

RNP APCH.	MISSED APPROACH:
<p>▼ For uncompensated Baro-VNAV systems, LNAV/VNAV NA below -16°C or above 54°C. ▲ Rwy 14 helicopter visibility reduction below ¾ SM NA. When local altimeter setting not received, use Chippewa County Intl altimeter setting and increase all DA 45 feet and all MDA 60 feet. Increase LNAV/VNAV all Cats visibilities to 1¼ mile and LNAV Cat C visibility to 1½ mile.</p>	<p>Climb to 3000 direct YIRUC and on track 147° to ALVUS and hold.</p>

ASOS <b>118.375</b>	TORONTO CENTER <b>132.65 344.5</b>	UNICOM <b>122.7 (CTAF) 0</b>
------------------------	---------------------------------------	---------------------------------



CATEGORY	A	B	C	D
LPV DA	962-1	250 (300-1)		NA
LNAV/VNAV DA	1137-1¾	425 (500-1¾)		NA
LNAV MDA	1240-1	528 (600-1)	1240-1¾ 528 (600-1¾)	NA

