

WAAS CH 49122 W32A	APP CRS 323°	Rwy Idg TDZE 716 Apt Elev 716	5056 716 716
--	------------------------	---	---

RNAV (GPS) RWY 32

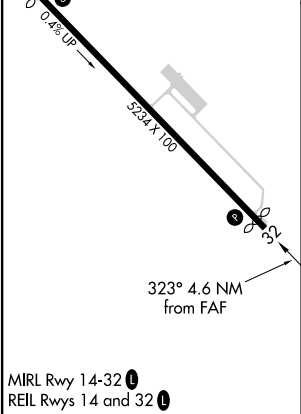
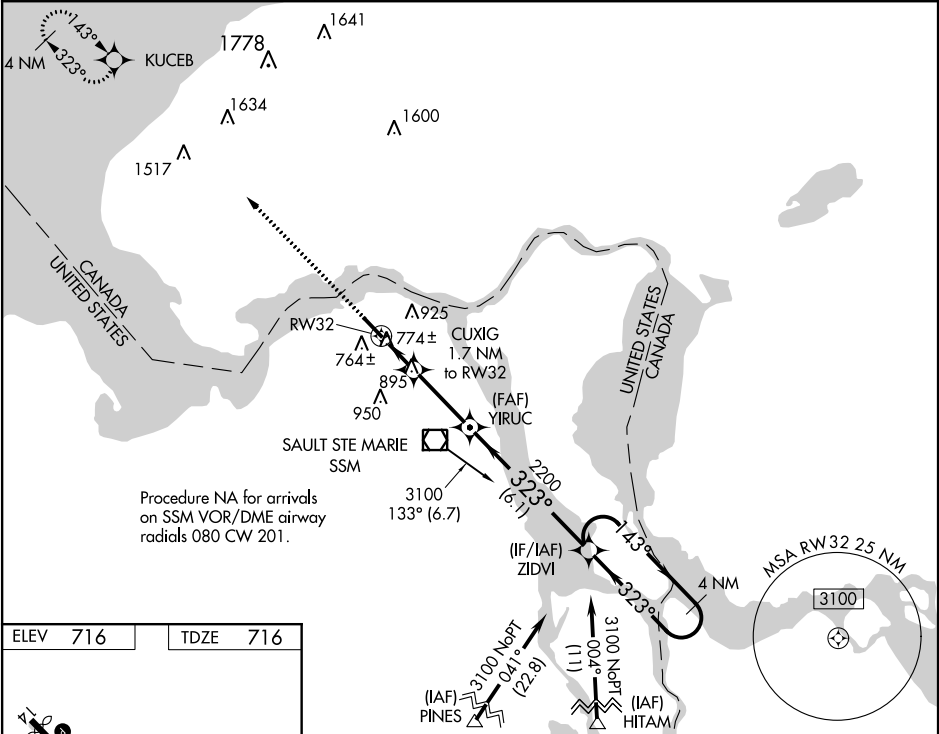
SAULT STE MARIE MUNI/SANDERSON FIELD (A/NJ)



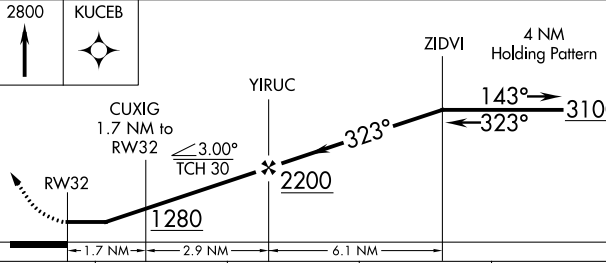
RNP APCH.

⚠ Rwy 32 helicopter visibility reduction below $\frac{3}{4}$ SM NA. When local altimeter setting not received, use Chippewa County Int'l altimeter setting and increase all MDA 60 feet, and increase LP Cat C visibility $\frac{1}{8}$ mile and LNAV Cat C visibility $\frac{1}{4}$ mile.

MISSED APPROACH: Climb to 2800 direct KUCEB and hold.

ASOS 118.375	TORONTO CENTER 132.65 344.5	UNICOM 122.7 (CTAF) 0
------------------------	---------------------------------------	---------------------------------



2800	KUCEB				
					
					
CATEGORY	A	B	C	D	
LP MDA	1040-1 324 (400-1)			NA	
LNAV MDA	1200-1 484 (500-1)	1200-1 $\frac{3}{8}$ 484 (500-1 $\frac{3}{8}$)		NA	
CIRCLING	1280-1 564 (600-1)	1320-1 $\frac{3}{4}$ 604 (700-1 $\frac{3}{4}$)		NA	

EC-1, 31 DEC 2020 to 28 JAN 2021

EC-1, 31 DEC 2020 to 28 JAN 2021