

WAAS CH <b>72810</b> <b>W27A</b>	APP CRS <b>274°</b>	Rwy Idg <b>7201</b> TDZE <b>770</b> Apt Elev <b>782</b>
--	------------------------	---

RNAV (GPS) RWY 27  
BISHOP INTL (FNT)

BISHOP INTL (FNT)



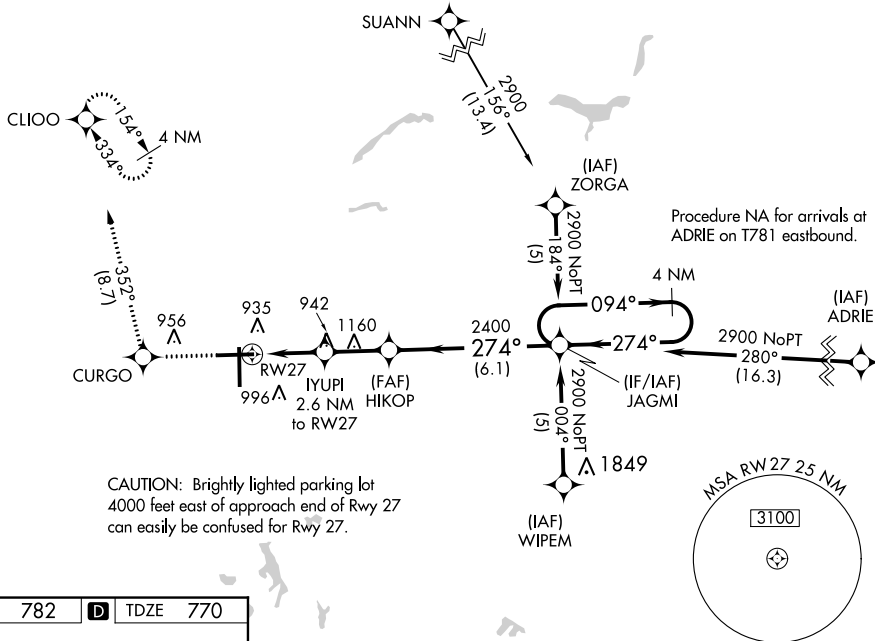
For uncompensated Baro-VNAV systems, LNAV/VNAV NA below -16°C (4°F) or above 54°C (130°F). Rwy 27 helicopter visibility reduction below  $\frac{3}{4}$  SM NA. DME/DME RNP-0.3 NA. For inop ALS, increase LNAV/VNAV all Cats visibility to 1 $\frac{1}{2}$  SM, LNAV Cat A/B visibility to 1 SM and LNAV Cat C/D visibility to 1 $\frac{1}{2}$  SM.

MALSR



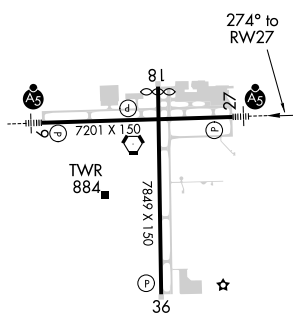
**MISSED APPROACH:**  
Climb to 3000 direct  
CURGO and track  
352° to CLIOO  
and hold.

ATIS 133.15	GREAT LAKES APP CON ★ 118.8 257.9	FLINT TOWER ★ 126.3 (CTAF) 257.9	GND CON 121.9	CLNC DEL 121.75	UNICOM 122.95
----------------	--------------------------------------	-------------------------------------	------------------	--------------------	------------------



CAUTION: Brightly lighted parking lot 4000 feet east of approach end of Rwy 27 can easily be confused for Rwy 27.

ELEV	782	<b>D</b>	TDZE	770
------	-----	----------	------	-----



HIRL Rwy 9-27 and 18-36  
REIL Rwy 18 and 36

3000 ↑	CURGO ✦	tr 352°	CLIOO ✦				
* LNAV only				IYUPI 2.6 NM to RW27 * 1.4 NM to RW27 * 1640 2400 274° 2400 094° 2900 GP 3.00° TCH 56			
CATEGORY	A		B		C		D
LPV DA	1098-¾		328 (400-¾)				
LNAV/VNAV DA	1240-1		470 (500-1)				
LNAV MDA	1260-¾ 490 (500-¾)		1260-1 490 (500-1)				
CIRCLING	1260-1 478 (500-1)	1300-1 518 (600-1)	1300-1½ 518 (600-1½)	1520-2¼ 738 (800-2¼)			

RNAV (GPS) RWY 27