

|  |                        |   |             |
|--|------------------------|---|-------------|
| WAAS<br>CH <b>81915</b><br><b>W23A</b> | APP CRS<br><b>231°</b> | Rwy Idg<br>TDZE<br><b>721</b><br>Apt Elev<br><b>721</b> | <b>5395</b> |
|--|------------------------|---|-------------|

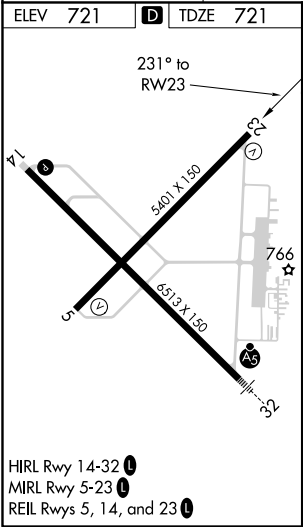
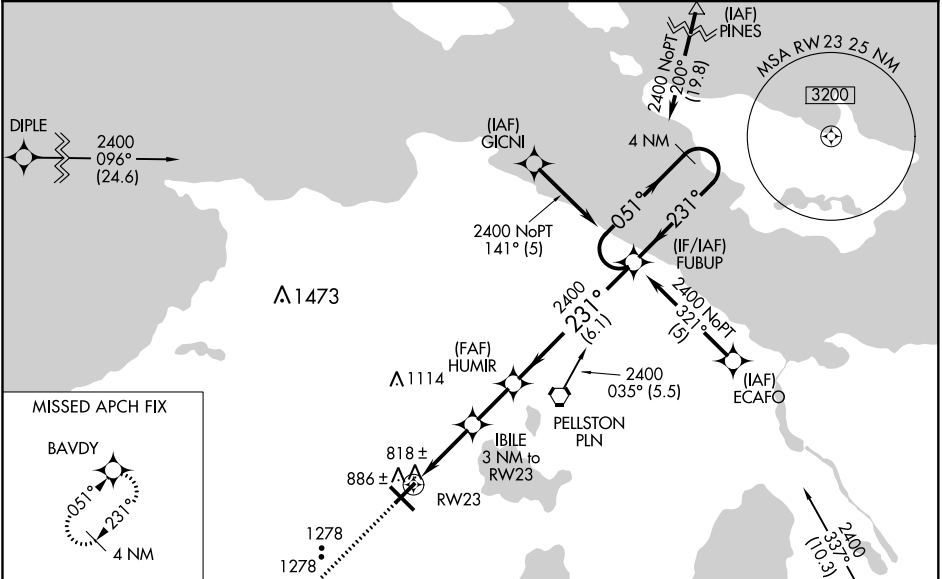
RNAV (GPS) RWY 23


PELLSTON RGNL AIRPORT OF EMMET COUNTY (PLN)

**Baro-VNAV NA** when using Harbor Springs altimeter setting. For uncompensated Baro-VNAV systems, LNAV/VNAV NA below -16°C (4°F) or above 47°C (116°F). DME/ DME RNP-0.3 NA. Rwy 23 helicopter visibility reduction below ¾ SM NA. When local altimeter setting not received, use Harbor Springs altimeter setting and increase LPV DA to 1085, LNAV/VNAV DA to 1137 and all visibilities ¼ mile, and all MDA 40 feet; increase Circling Cat C visibility ¼ mile. Circling Rwy 5 NA at night.


**MISSED APPROACH:**  
Climb to 3000 direct  
BAVDY and hold.

|                        |   |                                 |
|------------------------|---|---------------------------------|
| ASOS<br><b>119.025</b> | MINNEAPOLIS CENTER<br><b>134.6 354.05</b> | UNICOM<br><b>123.0 (CTAF) 0</b> |
|------------------------|---|---------------------------------|






3000




BAVDY




\* LNAV only.

RW23



IBILE  
3 NM to RW23

HUMIR



FUBUP

4 NM Holding Pattern

231°

051° → 2400  
← 231°

2400

GP 3.00°  
TCH 45

3 NM

2.1 NM

6.1 NM

| CATEGORY     | A                     | B                     | C                       | D                       |
|--------------|-----------------------|-----------------------|-------------------------|-------------------------|
| LPV DA       | 1057-1¼               |                       | 336 (400-1¼)            |                         |
| LNAV/VNAV DA | 1109-1¼               |                       | 338 (400-1¼)            |                         |
| LNAV MDA     | 1240-1                | 519 (600-1)           | 1240-1½<br>519 (600-1½) | 1240-1¾<br>519 (600-1¾) |
| CIRCLING     | 1260-1<br>539 (600-1) | 1300-1<br>579 (600-1) | 1300-1½<br>579 (600-1½) | 1420-2¼<br>699 (700-2¼) |

EC-1, 31 DEC 2020 to 28 JAN 2021

EC-1, 31 DEC 2020 to 28 JAN 2021