




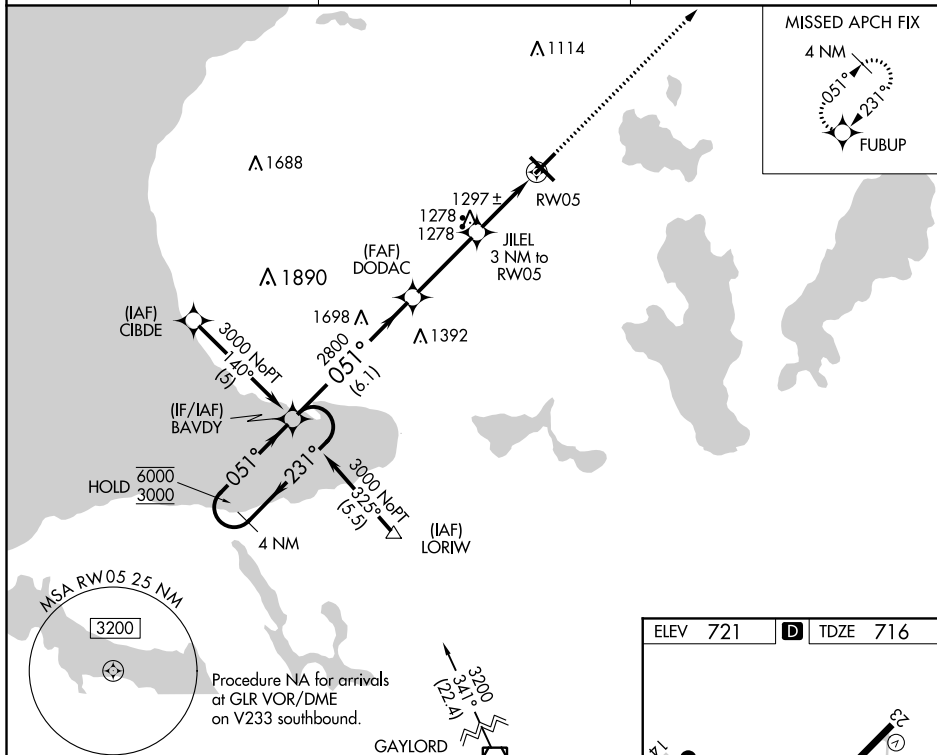
RNAV (GPS) RWY 5

PELLSTON RGNL AIRPORT OF EMMET COUNTY (PLN)

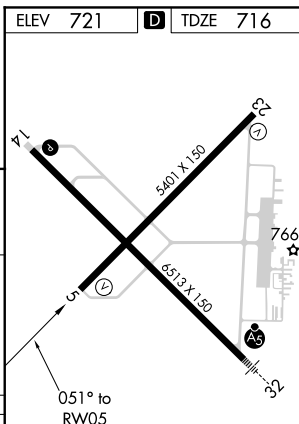
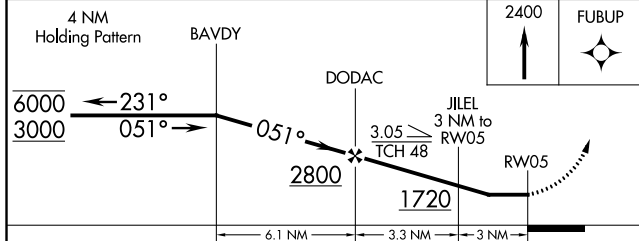


 33°C

Straight-in and Circling Rwy 5 NA at night. Rwy 5 helicopter visibility reduction below 1 SM NA. When local altimeter setting not received, use Harbor Springs altimeter setting and increase all MDA 40 feet, increase LNAV Cat A visibility $\frac{1}{4}$ SM.

MISSED APPROACH:
Climb to 2400 direct
FUBUP and hold.

UNICOM
123.0 (CTAF) **L**

ELEV 721	D	TDZE 716
----------	----------	----------



CATEGORY	A	B	C	D
LNAV MDA	1560-1 844 (900-1)	1560-1¼ 844 (900-1¼)	1560-2½ 844 (900-2½)	1560-2¾ 844 (900-2¾)
CIRCLING	1560-1¼	839 (900-1¼)	1560-2½ 839 (900-2½)	1560-2¾ 839 (900-2¾)

HIRL Rwy 14-32 **L**
MIRL Rwy 5-23 **L**
REIL Rwy 5, 14, and 23 **L**