

WAAS CH 57933 W17A	APP CRS 174°	Rwy Idg TDZE Apt Elev	6502 867 874
--	------------------------	-----------------------------	---

RNAV (GPS) RWY 17

KALAMAZOO/BATTLE CREEK INTL (AZO)

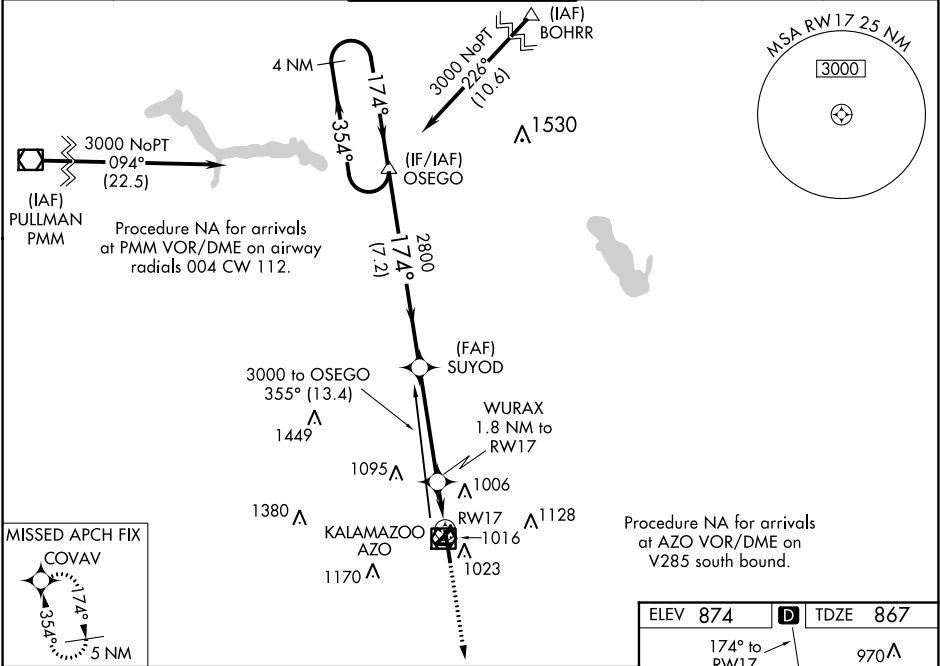
⚠

ASR

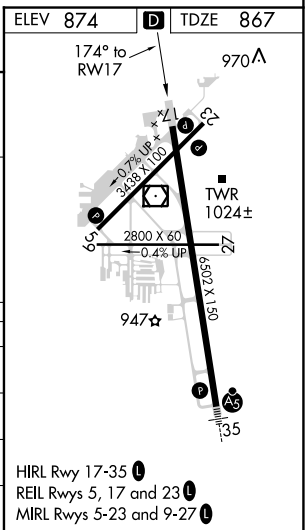
Baro-VNAV NA when using Battle Creek altimeter setting. For uncompensated Baro-VNAV systems, LNAV/VNAV NA below -21°C (-5°F) or above 54°C (130°F). DME/DME RNP-0.3 NA. Helicopter visibility reduction below ¾ SM not authorized. When local altimeter setting not received, use Battle Creek altimeter setting and increase all DA 44 feet and all MDA 60 feet. Increase LPV all Cats and LNAV Cat C/D visibility ½ mile. Increase LNAV/VNAV visibility all Cats ¼ mile. Circling to Rwy 9/27 and 5/23 NA at night.

MISSED APPROACH:
Climb to 2800 direct COVAV and hold.

ATIS 127.25	GREAT LAKES APP CON ★ 121.2 239.25	KALAMAZOO TOWER ★ 118.3 (CTAF) 0 257.875	GND CON 121.9	CLNC DEL 121.75	UNICOM 122.95
-----------------------	--	---	-------------------------	---------------------------	-------------------------



4 NM Holding Pattern		OSEGO		SUYOD		WURAX 1.8 NM to RW17		RW17	
GP 3.00° TCH 45		3000		2800		2800		1460	
CATEGORY		A		B		C		D	
LPV DA				1156-1		289 (300-1)			
LNAV/VNAV DA				1185-1		318 (400-1)			
LNAV MDA		1320-1		453 (500-1)		1320-1¾		453 (500-1¾)	
CIRCLING		1380-1		506 (600-1)		1480-1¾		1480-2	
						606 (700-1¾)		606 (700-2)	



EC-1, 31 DEC 2020 to 28 JAN 2021

EC-1, 31 DEC 2020 to 28 JAN 2021