

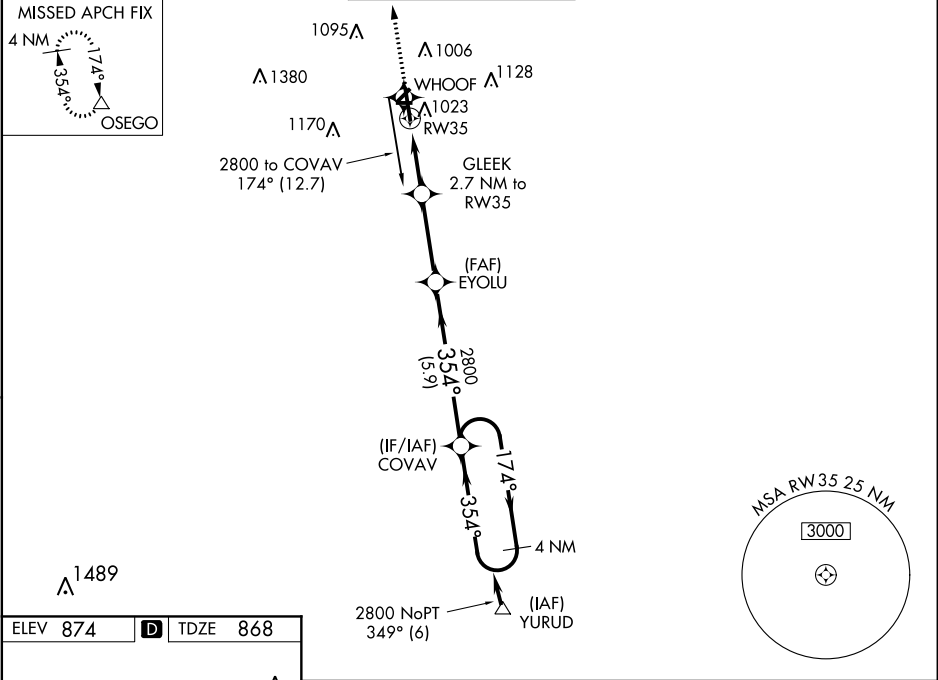
WAAS CH 61102 W35A	APP CRS 354°	Rwy Idg 6502 TDZE 868 Apt Elev 874
--	------------------------	---

RNAV (GPS) RWY 35

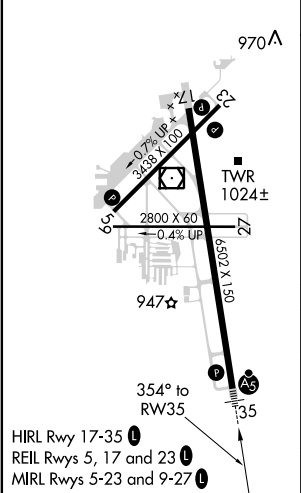
KALAMAZOO/BATTLE CREEK INTL (AZO)

RNP APCH.		MALSR 	MISSED APPROACH: Climb to 3000 direct OSEGO and hold.
 ASR	For uncompensated Baro-VNAV systems, LNAV/VNAV NA below -19°C or above 54°C. Circling Rwy 5, 9, 17, 23, 27 NA at night. **RVR 1800 authorized with use of FD or AP or HUD to DA.		

ATIS 127.25	GREAT LAKES APP CON ★ 121.2 239.25	KALAMAZOO TOWER ★ 118.3 (CTAF) 0 257.875	GND CON 121.9	CLNC DEL 121.75	UNICOM 122.95
-----------------------	--	--	-------------------------	---------------------------	-------------------------



ELEV 874	D	TDZE 868
-----------------	----------	-----------------



3000 ↑ OSEGO △		EYOLU		COVAV		4 NM Holding Pattern
* LNAV only.		GLEEK 2.7 NM to RW35		354°		2800
* 1.1 NM to RW35		* 1780		174°		2800
1.1		1.6 NM		3.2 NM		5.9 NM
CATEGORY	A	B	C	D		
LPV DA **	1068/24		200 (200-½)			
LNAV/VNAV DA	1264/35		396 (400-¾)			
LNAV MDA	1280/24	412 (500-½)	1280/40	412 (500-¾)		
CIRCLING	1380-1	506 (600-1)	1480-1¾ 606 (700-1¾)	1480-2 606 (700-2)		