

VOR/DME AZO 109.0 Chan 27	APP CRS 347°	Rwy Idg 6502 TDZE 868 Apt Elev 874
---	------------------------	---

VOR RWY 35
KALAMAZOO/BATTLE CREEK INTL (AZO)

T
A.S.R.

Circling to Rwy 5, 9, 23, 27 NA at night. DME required.
For inoperative MALSR, increase S-35 Cat C and D
visibility to RVR 6000.

MALSR

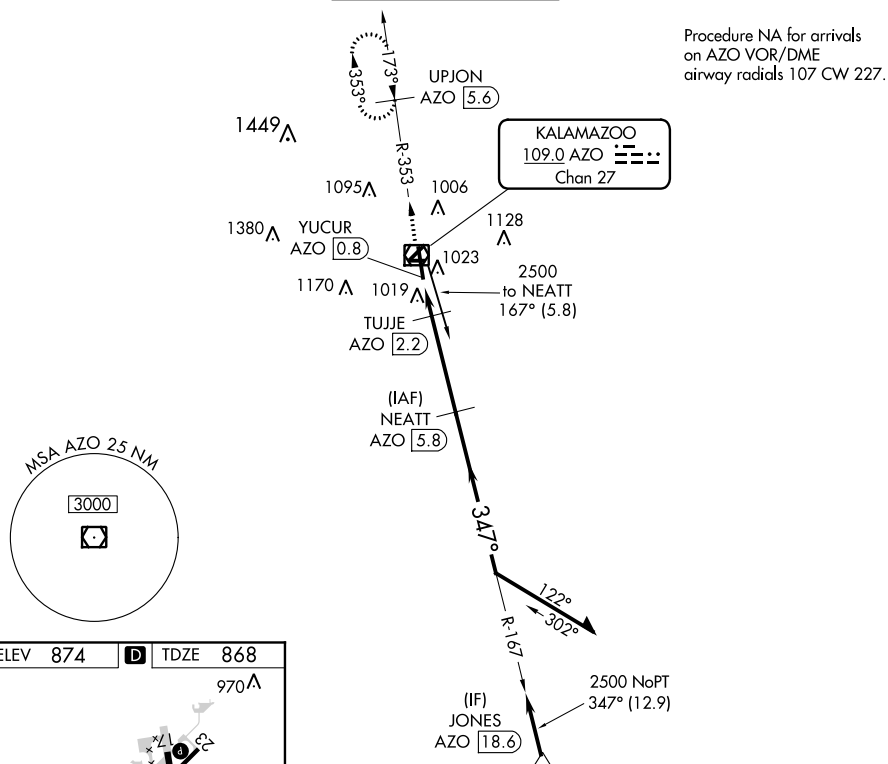
MISSED APPROACH: Climb to 2600 on AZO VOR/DME R-353 to UPJON/AZO 5.6 DME and hold.

ATIS
127.25

GREAT LAKES APP CON ★
121.2 239.25

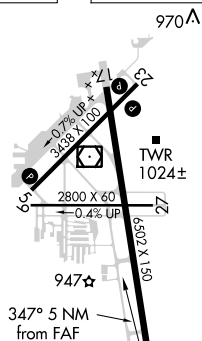
KALAMAZOO TOWER★
118.3 (CTAF) **L** 257.875

GND CON
121.9

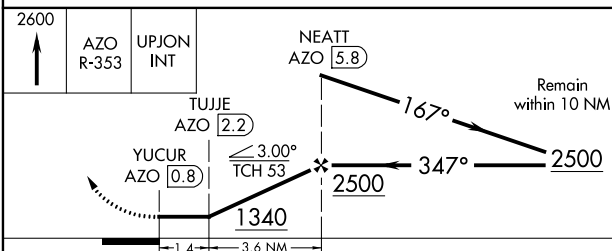
CLNC DEL
121.75UNICOM
122.95

EC-1, 31 DEC 2020 to 28 JAN 2021

ELEV	874	D	TDZE	868
------	-----	----------	------	-----



HIRL Rwy 17-35 **L**
REIL Rwy 5, 17 and 23 **L**
MIRL Rwy 5-23 and 9-27 **L**



CATEGORY	A	B	C	D
S-35	1280/24	412 (500-½)	1280/40	412 (500-¾)
C CIRCLING	1380-1	506 (600-1)	1480-1¾ 606 (700-1¾)	1480-2 606 (700-2)

KALAMAZOO, MICHIGAN
Amdt 18 02MAR17

42°14'N-85°33'W

KALAMAZOO/BATTLE CREEK INTL (AZO)
VOR RWY 35