

WAAS CH <b>50310</b> <b>W01A</b>	APP CRS <b>007°</b>	Rwy Idg TDZE Apt Elev	<b>9001</b> <b>685</b> <b>690</b>
--	------------------------	-----------------------------	---

RNAV (GPS) RWY 1

ALPENA COUNTY RGNL (APN)

RNP APCH.

▼

▲

❄️-32°C

For uncompensated Baro-VNAV systems, LNAV/VNAV NA below -16°C or above 48°C. When local altimeter setting not received, use Rogers City altimeter setting; increase all LPV DAs to 1029 feet, LNAV/VNAV DAs to 1084 feet and all MDAs 60 feet; increase LPV all Cats, LNAV/VNAV all Cats and LNAV Cats C and D visibility ¼ SM. Baro-VNAV and VDP NA when using Roger City altimeter setting. For inop ALS, increase LPV all Cats visibility to 1 SM.

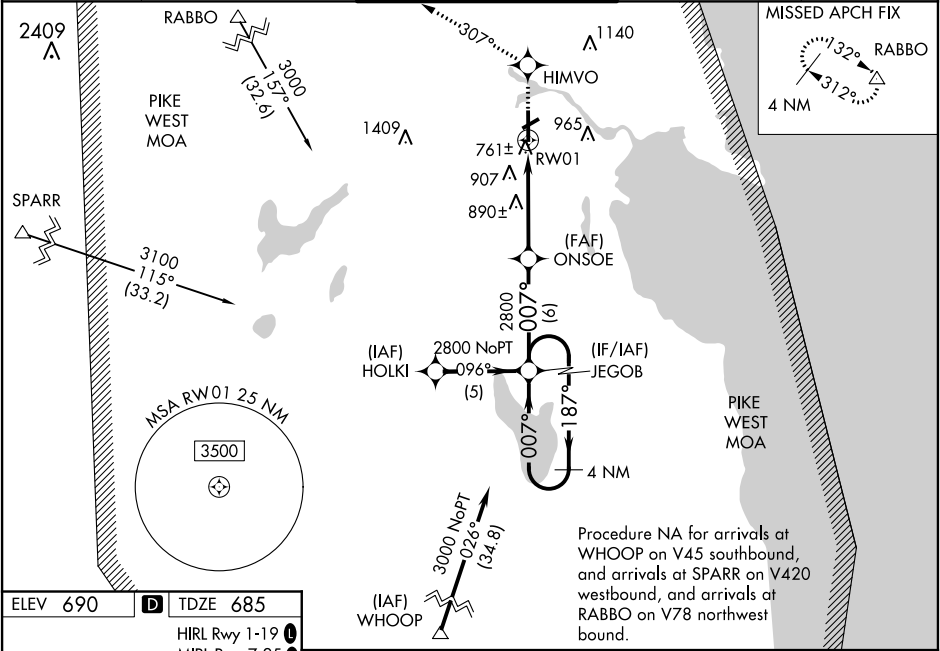
MALSR

AS

⏏

MISSED APPROACH:  
Climb to 3500 direct HIMVO and on track 307° to RABBO and hold.

ASOS <b>120.675</b>	ALPENA APP CON ★ <b>128.425 379.3</b>	ALPENA TOWER ★ <b>121.35 (CTAF) 318.1</b>	GND CON <b>121.9 275.8</b>	UNICOM <b>122.95</b>
------------------------	--	--	-------------------------------	-------------------------



ELEV 690

D

TDZE 685

HIRL Rwy 1-19

MIRL Rwy 7-25

REIL Rwys 7, 19 and 25

TWR 768

5028 X 100

9001 X 100

007° to RW01

4 NM Holding Pattern		JEGOB	ONSOE	3500	HIMVO	RABBO
2800		187°	007°	2800	tr 307°	△
GP 3.00° TCH 52		2800		*1.3 NM to RW01		
				*LNAV only.		
				6 NM		
				5 NM		
				1.3		
CATEGORY	A	B	C	D		
LPV DA	974-1½		289 (300-½)			
LNAV/VNAV DA	1029-¾		344 (400-¾)			
LNAV MDA	1160-½	475 (500-½)	1160-¾ 475 (500-¾)	1160-1 475 (500-1)		
CIRCLING	1160-1	470 (500-1)	1220-1½ 530 (600-1½)	1280-2 590 (600-2)		