

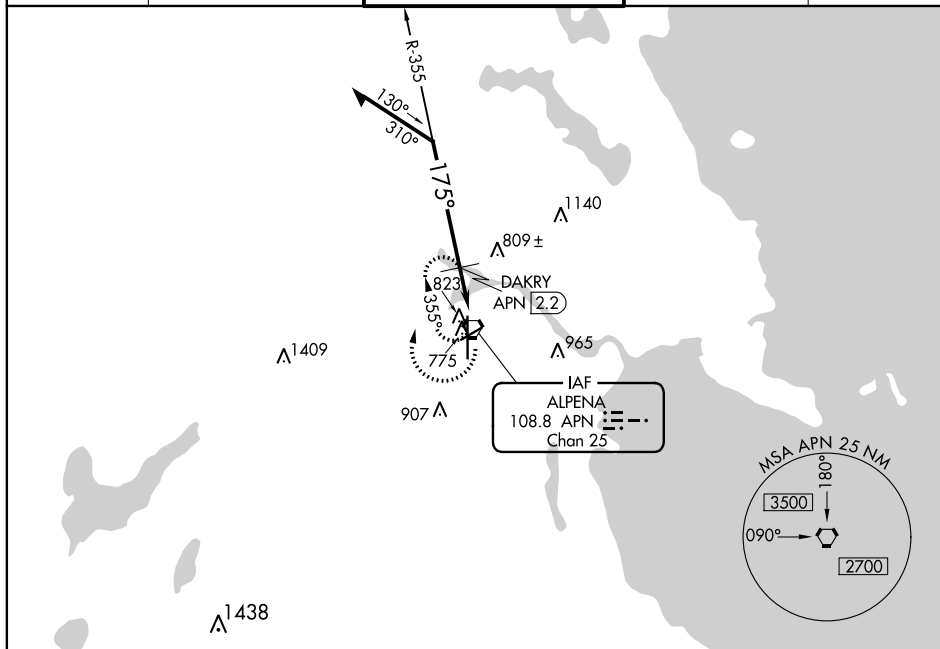
VORTAC APN 108.8 Chan 25	APP CRS 175°	Rwy Idg TDZE Apt Elev	9001 683 690
--	------------------------	-----------------------------	---

VOR RWY 19
ALPENA COUNTY RGNL (APN)

 -32°C Rwy 19 helicopter visibility reduction below $\frac{3}{4}$ SM NA.

MISSED APPROACH: Climbing right turn to 2500 in APN VORTAC holding pattern.

ASOS 120.675	ALPENA APP CON ★ 128.425 379.3	ALPENA TOWER ★ 121.35 (CTAF) 0 318.1	GND CON 121.9 275.8	UNICOM 122.95
-----------------	-----------------------------------	---	------------------------	------------------



EC-1, 31 DEC 2020 to 28 JAN 2021

Remain within 10 NM

APN VORTAC

2500

APN

355°

175°

2500

VGSI and descent angles not coincident (VGSI Angle 3.00/TCH 39).

DAKRY APN (2.2)

APN (1.6)

1340

3.18°

TCH 55

0.6 NM

1.2 NM

CATEGORY	A	B	C	D
S-19	1340-1	657 (700-1)	1340-1 $\frac{7}{8}$	657 (700-1 $\frac{7}{8}$)
C CIRCLING	1340-1	650 (700-1)	1340-1 $\frac{7}{8}$ 650 (700-1 $\frac{7}{8}$)	1340-2 650 (700-2)

DAKRY FIX MINIMUMS

S-19	1100-1	417 (500-1)	1100-1 $\frac{1}{8}$	417 (500-1 $\frac{1}{8}$)
C CIRCLING	11140-1	450 (500-1)	1220-1 $\frac{1}{2}$ 530 (600-1 $\frac{1}{2}$)	1280-2 590 (600-2)

