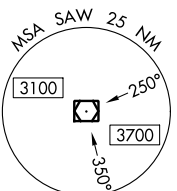
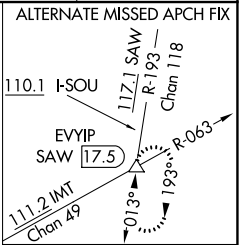
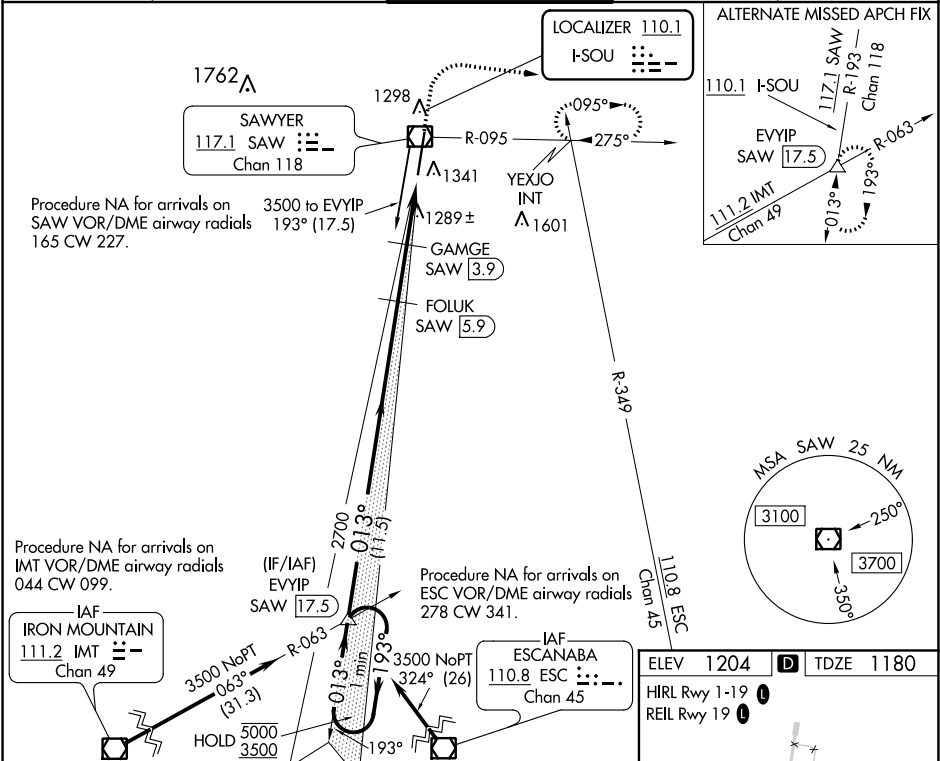


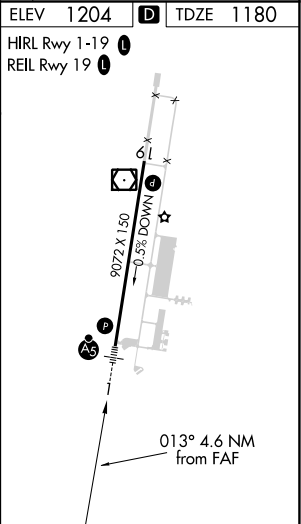
LOC I-SOU <b>110.1</b>	APP CRS <b>013°</b>	Rwy Idg <b>9072</b>
		TDZE <b>1180</b>
		Apt Elev <b>1204</b>

ILS or LOC RWY 1  
SAWYER INTL (SAW)

DME required for LOC only.		MALSR	MISSED APPROACH: Climb to 1700 then climbing right turn to 3000 on heading 101° and on SAW VOR/DME R-095 to YEXJO INT and hold.	
Autopilot coupled approach NA below 1360 MSL.		AS		
AWOS-3 <b>118.375</b>	MINNEAPOLIS CENTER <b>119.1 290.2</b>	SAWYER TOWER ★ <b>119.975 (CTAF)</b>	GND CON <b>121.65</b>	UNICOM <b>122.7</b>



One Minute Holding Pattern		EVYIP INT SAW 17.5		FOLUK SAW 5.9		1700 ↑		3000 hdg 101°		SAW R-095		YEXJO INT	
5000 ← 193°		3500 ← 013°		2700		2700		GAMGE SAW 3.9		*SAW 2.3		* LOC only.	
GS 3.00° TCH 50				2700		*2040							
		11.5 NM		2 NM		1.6 NM		1 NM					
CATEGORY		A		B		C		D					
S-ILS 1				1380-½		200 (200-½)							
S-LOC 1		1580-½		400 (400-½)		1580-⅝		400 (400-⅝)					
CIRCLING		1680-1		476 (500-1)		1820-1¾ 616 (700-1¾)		1820-2 616 (700-2)					



EC-1, 31 DEC 2020 to 28 JAN 2021

EC-1, 31 DEC 2020 to 28 JAN 2021