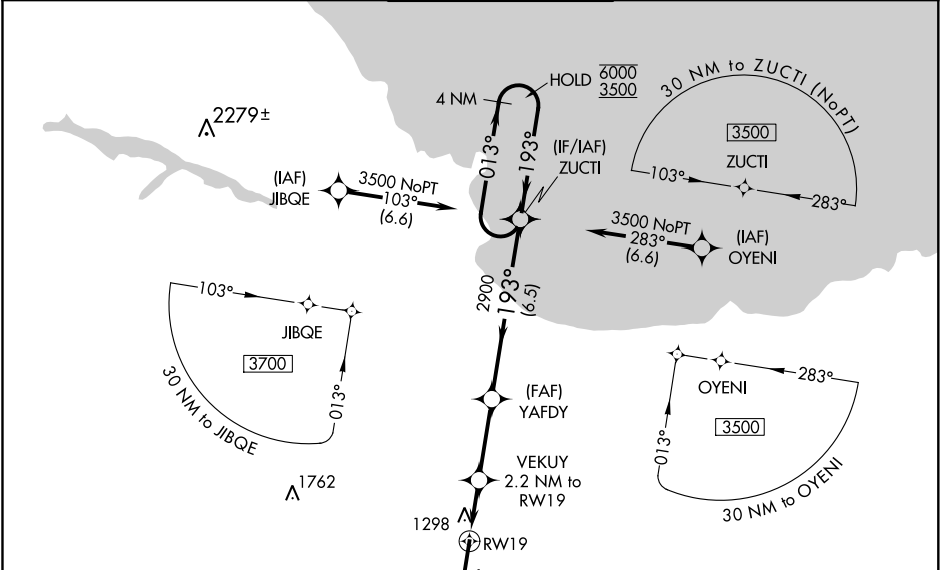


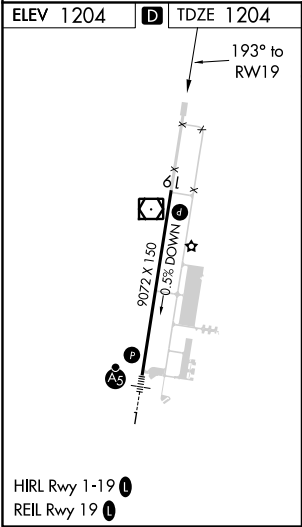
WAAS CH <b>86616</b> <b>W19A</b>	APP CRS <b>193°</b>	Rwy Idg TDZE Apt Elev	<b>9072</b> <b>1204</b> <b>1204</b>
--	------------------------	-----------------------------	---

RNAV (GPS) RWY 19  
SAWYER INTL (SAW)

RNP APCH. For uncompensated Baro-VNAV systems, LNAV/VNAV NA below -17°C or above 54°C.		MISSED APPROACH: Climb to 3500 direct EVYIP and hold.		
AWOS-3 <b>118.375</b>	MINNEAPOLIS CENTER <b>119.1 290.2</b>	SAWYER TOWER ★ <b>119.975 (CTAF) 0</b>	GND CON <b>121.65</b>	UNICOM <b>122.7</b>



ELEV 1204	D	TDZE 1204
-----------	---	-----------



3500 EVYIP		VGSI and RNAV glidepath not coincident. (VGSI Angle 3.00/TCH 53).		4 NM Holding Pattern	
* LNAV only		YAFDY 2.2 NM to 2900 RW19		ZUCTI	
* 1.6 NM to RW19		* 1960		GP 3.00° TCH 60	
RW19		1.6 NM		0.6 NM	
2.9 NM		6.5 NM		013° → 6000	
193°		193°		← 193° 3500	
CATEGORY	A	B	C	D	
LPV DA	1404-3/4		200 (200-3/4)		
LNAV/VNAV DA	1521-7/8		317 (400-7/8)		
LNAV MDA	1620-1	416 (500-1)	1620-1 1/8	416 (500-1 1/8)	
CIRCLING	1680-1	476 (500-1)	1820-1 3/4	1820-2	
			616 (700-1 3/4)	616 (700-2)	