

LOM CI	APP CRS	Rwy Idg	7203
400	337°	TDZE	796
		Apt Elev	799

NDB RWY 34

CHIPPEWA COUNTY INTL (CIU)

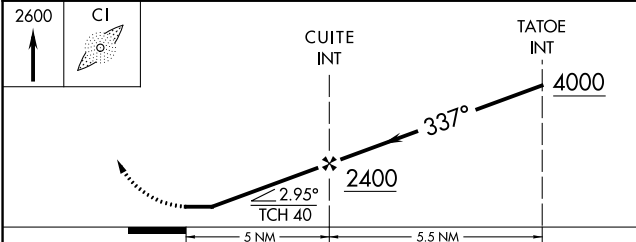
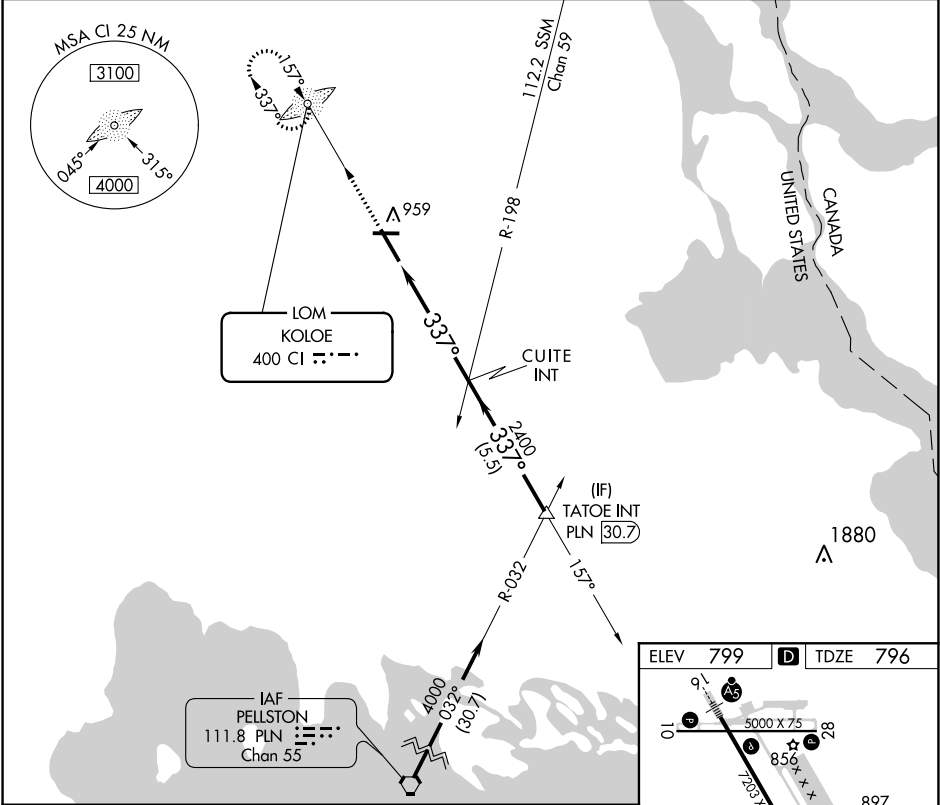
▼

NA

When local altimeter setting not received, use Sault-Ste Marie Muni/
Sanderson Field altimeter setting and increase all MDA 60 feet and
increase S-34 Cat C/D visibility to 1 3/8 .

MISSED APPROACH: Climb to 2600 direct
KOLOE LOM and hold.

AWOS-3PT 127.575	TORONTO CENTER 132.65 344.5	UNICOM 123.0 (CTAF) 0
----------------------------	---------------------------------------	---------------------------------



ELEV 799 D TDZE 796

REIL Rwy 10, 28 and 34 0
MIRL Rwy 10-28 0
HIRL Rwy 16-34 0

FAF to MAP 5 NM

Knots	60	90	120	150	180
Min:Sec	5:00	3:20	2:30	2:00	1:40

CATEGORY	A	B	C	D
S-34	1220-1 424 (500-1)		1220-1 1/4 424 (500-1 1/4)	
CIRCLING	1260-1 461 (500-1)		1260-1 1/2 461 (500-1 1/2)	1360-2 561 (600-2)

EC-1, 31 DEC 2020 to 28 JAN 2021

EC-1, 31 DEC 2020 to 28 JAN 2021