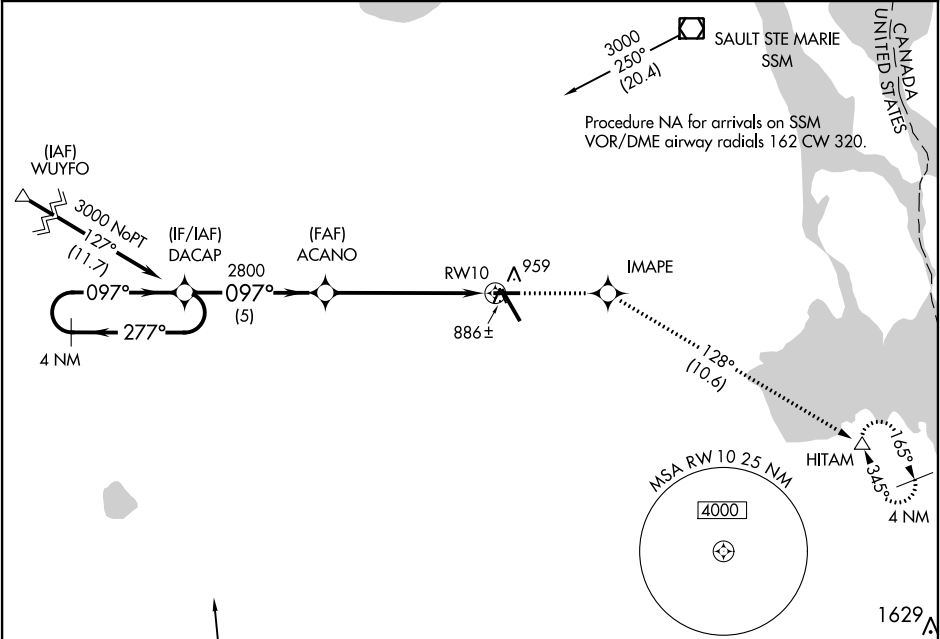


| | | |
|---------|----------|------|
| APP CRS | Rwy Idg | 5000 |
| 097° | TDZE | 799 |
| | Apt Elev | 799 |

RNAV (GPS) RWY 10
CHIPPEWA COUNTY INTL (CIU)

| | |
|---|---|
| RNP APCH. | MISSED APPROACH: Climb to 2900 direct IMAPE and track 128° to HITAM and hold. |
| VDP NA with Sault Ste Marie altimeter setting. When local altimeter setting not received, use Sault Ste Marie Muni/Sanderson Field altimeter setting; increase all MDA 60 feet, increase LNAV visibility Cat C/D and Circling Cat C ¼ SM. | |

| | | |
|---------------------|--------------------------------|--------------------------|
| AWOS-3PT 127.575 | TORONTO CENTER 132.65 344.5 | UNICOM 123.0 (CTAF) 0 |
|---------------------|--------------------------------|--------------------------|



Procedure NA for arrivals on PLN
VORTAC airway radials 295 CW 023.

4 NM Holding Pattern

DACAP

2900

IMAPE

tr 128°

HITAM

ACANO

1.5 NM to RW10

2800

3.05° TCH 40

5 NM

4.5 NM

1.5

| CATEGORY | A | B | C | D |
|----------|--------|-------------|-------------------------|-------------------------|
| LNAV MDA | 1320-1 | 521 (600-1) | 1320-1½ | 521 (600-1½) |
| CIRCLING | 1320-1 | 521 (600-1) | 1320-1½ 521 (600-1½) | 1360 - 2 561 (600-2) |

ELEV 799

D TDZE 799

3000 x 75

2800 x 150

3400 x 150

856

897

897

097° to RW10

REIL Rws 10, 28 and 34

MIRL Rwy 10-28

HIRL Rwy 16-34

EC-1, 31 DEC 2020 to 28 JAN 2021

EC-1, 31 DEC 2020 to 28 JAN 2021