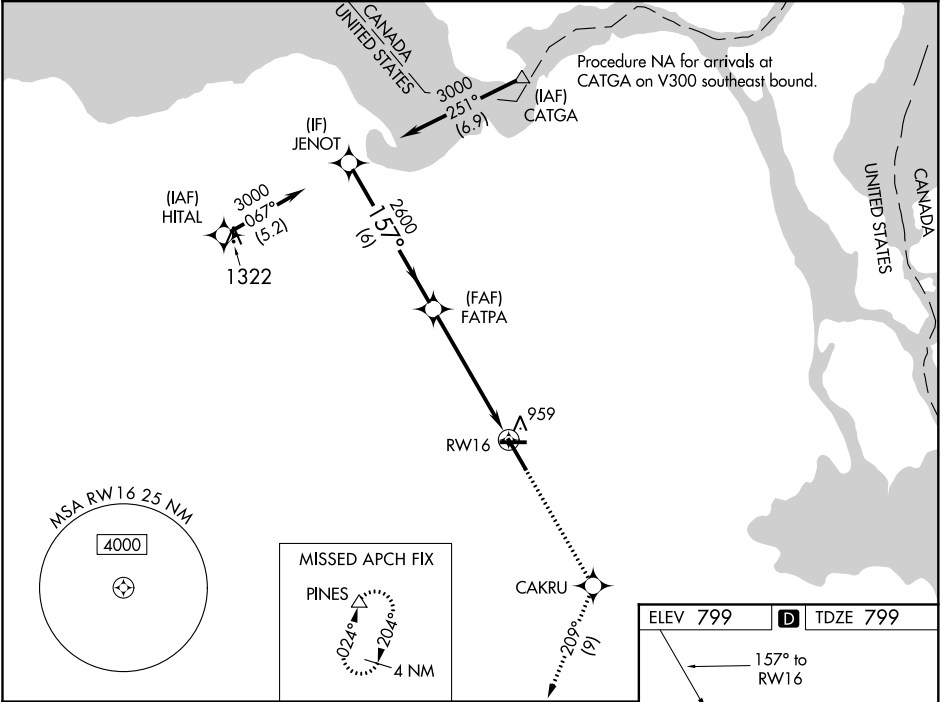


WAAS CH <b>69215</b> <b>W16A</b>	APP CRS <b>157°</b>	Rwy Idg TDZE Apt Elev <b>7203</b> <b>799</b> <b>799</b>
--	------------------------	--

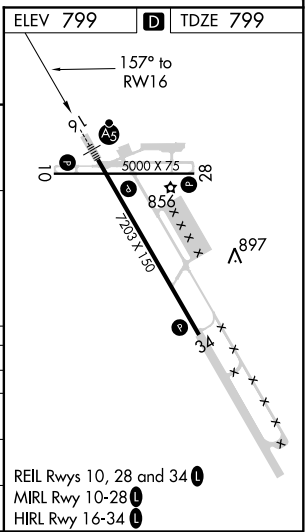
RNAV (GPS) RWY 16  
CHIPPEWA COUNTY INTL (CIU)

RNP APCH.	MALSR	MISSED APPROACH: Climb to 3000 direct CAKRU and on track 209° to PINES and hold.
For uncompensated Baro-VNAV systems, LNAV/VNAV NA below -16°C or above 54°C. For inop ALS, increase LPV all Cats, LNAV/VNAV all Cats and LNAV Cats A/B/C ½ SM; increase LNAV Cat D ¼ SM.		

AWOS-3PT <b>127.575</b>	TORONTO CENTER <b>132.65 344.5</b>	UNICOM <b>123.0 (CTAF) 0</b>
----------------------------	---------------------------------------	---------------------------------



JENOT	FATPA	3000	CAKRU	tr 209°	PINES
3000	2600				
GP 3.00° TCH 58			*1.1 NM to RWY 16		*LNAV only.
	6 NM	4.3 NM	1.1		
CATEGORY	A	B	C	D	
LPV DA		1068-½	269 (300-½)		
LNAV/VNAV DA		1204-1	405 (500-1)		
LNAV MDA	1220-½ 421 (500-½)		1220-¾ 421 (500-¾)	1220-1 421 (500-1)	
CIRCLING	1260-1 461 (500-1)		1260-1½ 461 (500-1½)	1360-2 561 (600-2)	



EC-1, 31 DEC 2020 to 28 JAN 2021

EC-1, 31 DEC 2020 to 28 JAN 2021