

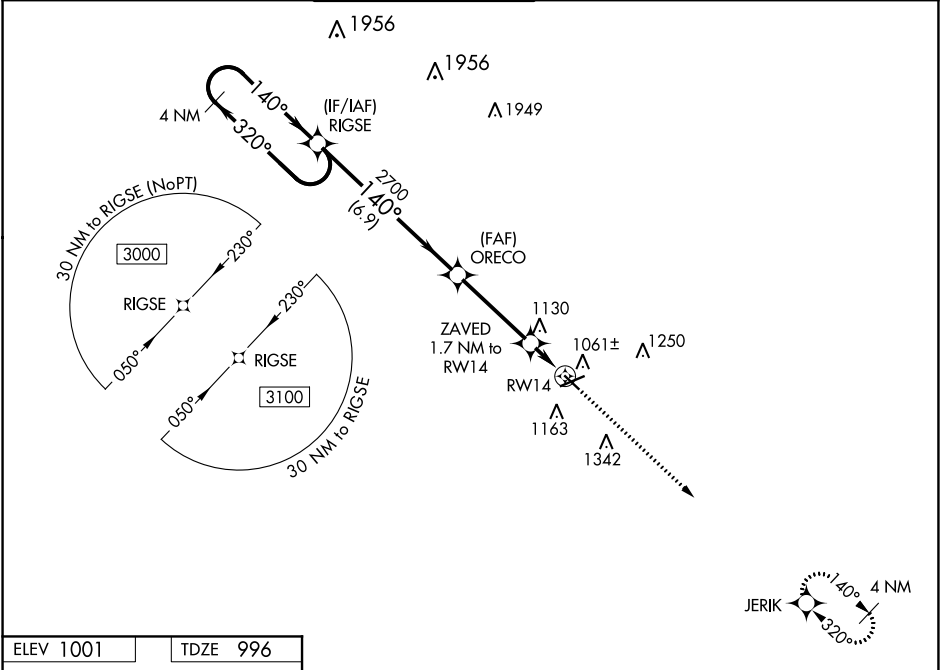
WAAS CH <b>86527</b> <b>W14A</b>	APP CRS <b>140°</b>	Rwy Idg TDZE <b>996</b> Apt Elev <b>1001</b>
--	------------------------	--

RNAV (GPS) RWY 14

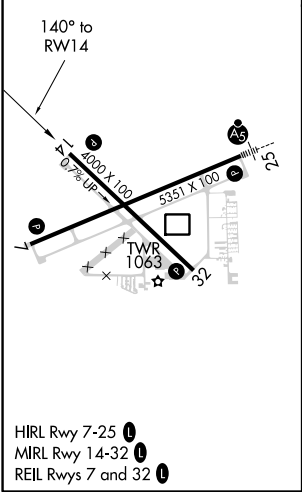
JACKSON COUNTY-REYNOLDS FIELD (JXN)

<div><div>▼</div><div>For uncompensated Baro-VNAV systems, LNAV/VNAV NA below -21°C (-5°F) or above 54°C (130°F). Rwy 14 helicopter visibility reduction below ¾ SM NA. DME/DME RNP-0.3 NA.</div></div>	MISSED APPROACH: Climb to 3100 direct JERIK and hold.
---	---

ATIS <b>125.725</b>	GREAT LAKES APP CON ★ <b>127.3 335.575</b>	JACKSON TOWER ★ <b>128.475(CTAF) 257.8</b>	GND CON <b>121.9</b>	CLNC DEL <b>121.9</b>	UNICOM <b>122.95</b>
------------------------	---	---	-------------------------	--------------------------	-------------------------



ELEV 1001	TDZE 996
-----------	----------



HIRL Rwy 7-25 1  
MIRL Rwy 14-32 1  
REIL Rwy 7 and 32 1

4 NM Holding Pattern		VGSI and RNAV glidepath not coincident (VGSI Angle 3.00/TCH 25).		3100	JERIK
RIGSE		ORECO		*LNAV only	
3000 ← 320°		2700		ZAVED 1.7 NM to RW14	
GP 3.00° TCH 45		2700		RW14	
		*1540			
		6.9 NM		3.6 NM	
				1.7	
CATEGORY	A	B	C	D	
LPV DA	1345-1¼ 349 (400-1¼)				
LNAV/VNAV DA	1463-1½ 467 (500-1½)				
LNAV MDA	1380-1	384 (400-1)	1380-1½	384 (400-1½)	
CIRCLING	1480-1	479 (500-1)	1660-1¾ 659 (700-1¾)	1660-2 659 (700-2)	

EC-1, 31 DEC 2020 to 28 JAN 2021

EC-1, 31 DEC 2020 to 28 JAN 2021