

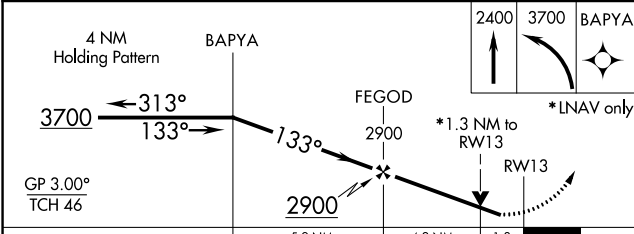
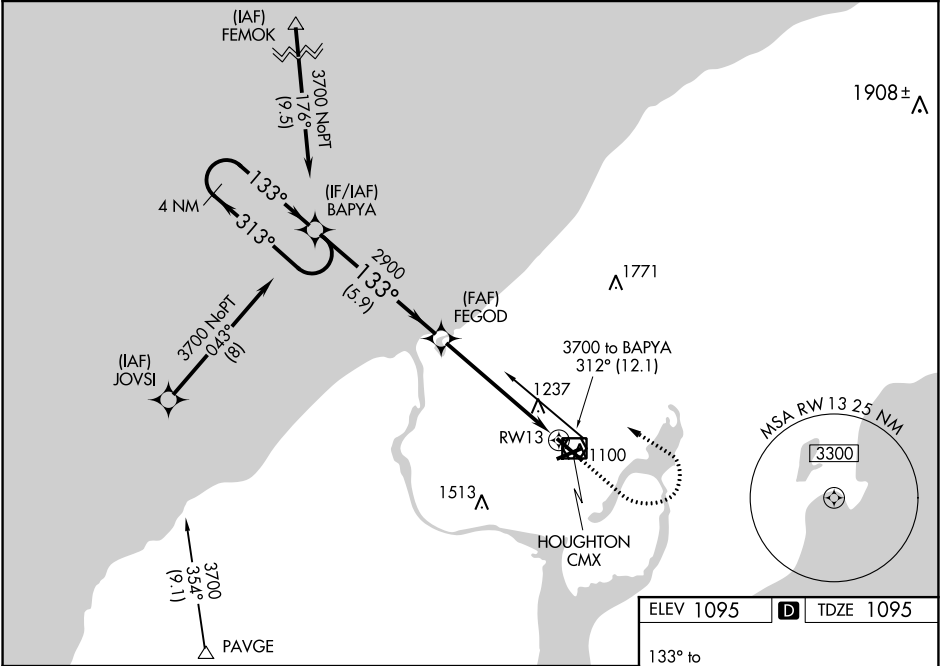
WAAS CH 93533 W13A	APP CRS 133°	Rwy Idg TDZE Apt Elev	6500 1095 1095
--	------------------------	-----------------------------	---

RNAV (GPS) RWY 13
HOUGHTON COUNTY MEMORIAL (CMX)

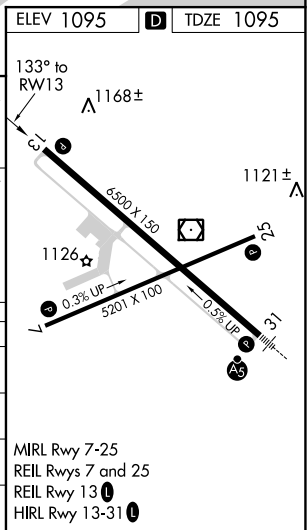
⚠ For uncompensated Baro-VNAV systems, LNAV/VNAV NA below -21°C (-5°F) or above 54°C (130°F). DME/DME RNP-0.3 NA. Baro-VNAV and VDP NA when using Marquette altimeter setting. When local altimeter setting not received, use Marquette altimeter setting and increase all DA 171 feet and all visibilities ¾ mile. Increase all MDA 180 feet and all Cat C/D visibilities ½ mile. Helicopter visibility reduction below ¾ SM NA.

MISSED APPROACH: Climb to 2400 then climbing left turn to 3700 direct BAPYA and hold.

ASOS 125.675	MINNEAPOLIS CENTER 133.55 379.1	UNICOM 122.7 (CTAF) 0
------------------------	---	---------------------------------



CATEGORY	A	B	C	D
LPV DA	1404-1	309 (400-1)		
LNAV/ VNAV DA	1626-17/8	531 (600-1%)		
LNAV MDA	1560-1	465 (500-1)	1560-13/8	465 (500-1%)
C CIRCLING	1620-1 525 (600-1)	1660-1 565 (600-1)	1700-13/4 605 (700-13/4)	1900-21/2 805 (900-21/2)



EC-1, 31 DEC 2020 to 28 JAN 2021

EC-1, 31 DEC 2020 to 28 JAN 2021