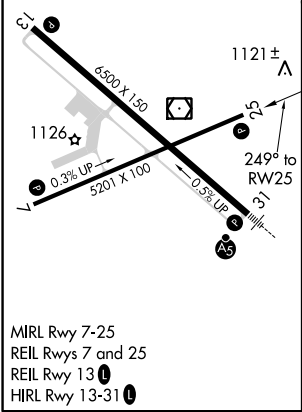
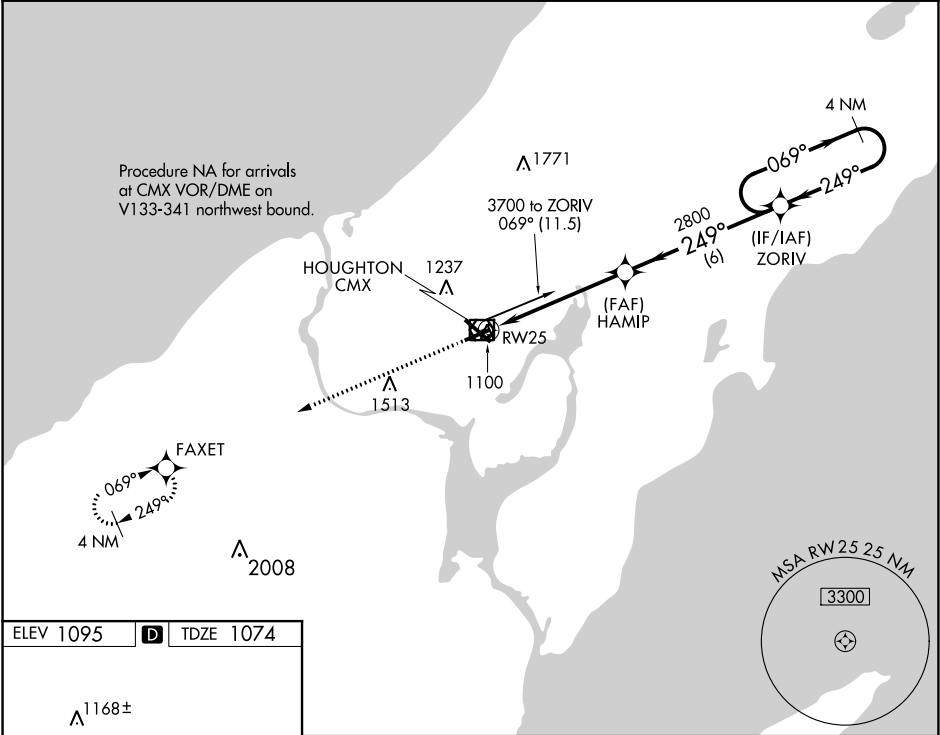


WAAS CH <b>86634</b> <b>W25A</b>	APP CRS <b>249°</b>	Rwy Idg TDZE Apt Elev	<b>5201</b> <b>1074</b> <b>1095</b>
--	------------------------	-----------------------------	---

**RNAV (GPS) RWY 25**  
HOUGHTON COUNTY MEMORIAL (CMX)

<p><b>⚠</b> DME/DME RNP-0.3 NA. VDP NA with Marquette altimeter setting. When local altimeter setting not received, use Marquette altimeter setting and increase all MDA 180 feet and increase all Cat C/D visibilities ½ mile. Helicopter visibility reduction below ¾ SM not authorized.</p>	<p><b>MISSSED APPROACH:</b> Climb to 3700 direct FAXET and hold.</p>
--	--

ASOS <b>125.675</b>	MINNEAPOLIS CENTER <b>133.55 379.1</b>	UNICOM <b>122.7 (CTAF) 0</b>
------------------------	---	---------------------------------



<div>3700 ↑</div>		<div>FAXET ✦</div>		<div>ZORIV</div>		<div>4 NM Holding Pattern</div>	
*LNAV only		*1.2 NM to RW25		HAMIP		069° → ← 249° 3700	
<div>RW25</div>		<div>2800</div>		249°			
<div>1.2</div>		<div>4.1 NM</div>		<div>6 NM</div>			
CATEGORY		A		B		C	
LP MDA		1440-1		366 (400-1)		D	
LNAV MDA		1500-1 426 (500-1)		1500-1¼ 426 (500-1¼)			
CIRCLING		1620-1 525 (600-1)		1660-1 565 (600-1)		1700-1¾ 605 (700-1¾) 1900-2½ 805 (900-2½)	

EC-1, 31 DEC 2020 to 28 JAN 2021

EC-1, 31 DEC 2020 to 28 JAN 2021