


LOC I-PTK	APP CRS	Rwy Idg	6520
111.1	095°	TDZE	981
		Apt Elev	981

ILS or LOC RWY 9R
OAKLAND COUNTY INTL (PTK)

RADAR required for procedure entry.

▼ Circling Rwy 9L, 36 NA at night. When local altimeter setting not received, use Coleman A Young Muni altimeter setting and increase DA to 1286 feet and all MDA 120 feet, increase S-LOC 9R Cat B visibility to RVR 4000, Cat C/D visibility $\frac{3}{8}$ SM, and Circling Cat B/C/D visibility $\frac{1}{2}$ SM. For inop MALSR, increase S-LOC 9R Cat C/D visibility to $\frac{1}{3}$ SM. For inop MALSR, when using Coleman A Young altimeter, increase S-ILS 9R all Cats visibility to RVR 4500, and increase S-LOC 9R Cat C/D visibility to 2 SM. **RVR 1800 authorized with the use of FD or AP or HUD to DA, NA when using Coleman A Young Muni altimeter setting.

MALSR



MISSED APPROACH:
Climb to 1600 then climbing right turn to 3000 direct SVM VORTAC and hold.

ATIS	DETROIT APP CON	PONTIAC TOWER *	GND CON	CLNC DEL	UNICOM
125.025	132.35 284.0	120.5 (CTAF) 0	121.9	118.25	122.95

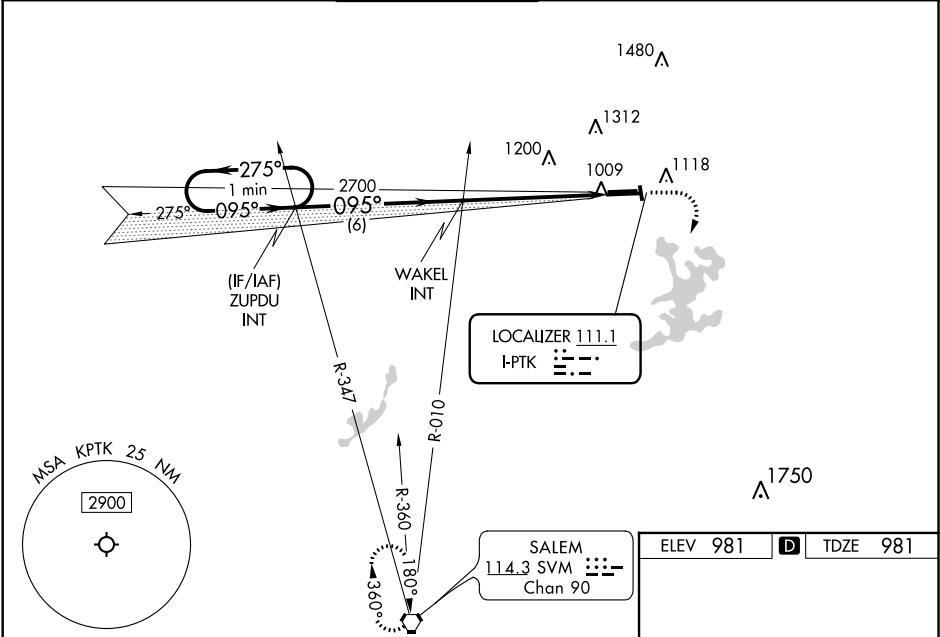


Diagram showing the 2700 ft MSL glide slope and the 2700 ft MSL altitude. It includes the ZUPDU and WAKEL intersection points, the 6 NM and 5.3 NM distances, and the 275° turn. It also shows the 1600 and 3000 ft altitudes, the SVM symbol, and the 095° 5.3 NM from FAF.

ELEV	981	TDZE	981
HIRL Rwy 9R-27L 0 MIRL Rwy 9L-27R REIL Rwy 27L 0 REIL Rwy 9L and 27R			
FAF to MAP 5.3 NM			
Knots	60	90	120 150 180
Min:Sec	5:18	3:32	2:39 2:07 1:46

EC-1, 31 DEC 2020 to 28 JAN 2021

EC-1, 31 DEC 2020 to 28 JAN 2021