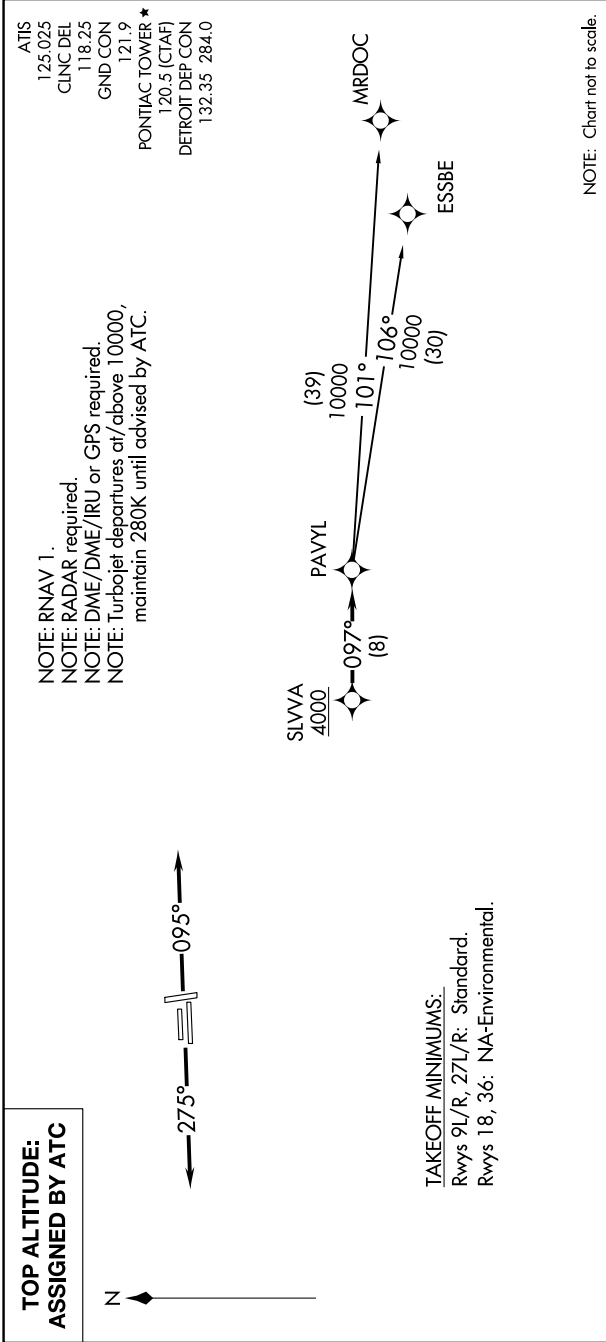


EC-1, 31 DEC 2020 to 28 JAN 2021



DEPARTURE ROUTE DESCRIPTION

TAKEOFF RUNWAYS 9L/R: Climb on heading 095° or as assigned for RADAR vectors to cross SLVVA at or above 4000, thence....  
TAKEOFF RUNWAYS 27L/R: Climb on heading 275° or as assigned for RADAR vectors to cross SLVVA at or above 4000, thence....  
.....on track 097° to PAVYL, then on (transition). Maintain ATC assigned altitude, expect filed altitude 10 minutes after departure.

ESSBE TRANSITION (PAVYL2.ESSBE):  
MRDOC TRANSITION (PAVYL2.MRDOC):

EC-1, 31 DEC 2020 to 28 JAN 2021