

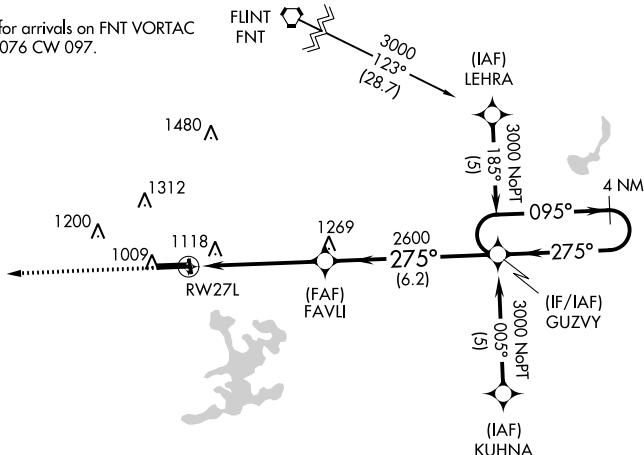
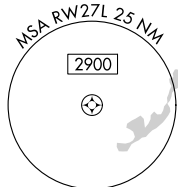
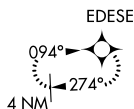
RNAV (GPS) RWY 27L
OAKLAND COUNTY INTL (PTK)

T For uncompensated Baro-VNAV systems, LNAV/VNAV NA below -16°C (4°F) or above 47°C (116°F).
A Baro-VNAV and VDP NA when using Coleman A Young altimeter setting. Circling Rwy 9L, 36 NA at night. When local altimeter setting not received, use Coleman A Young Muni altimeter setting and increase LPV DA to 1279 feet, LNAV/VNAV DA to 1568 and all MDA 120 feet, increase LPV and LNAV/VNAV all cats visibility $\frac{1}{4}$ SM, LNAV Cat C/D, and Circling Cat C/D visibility $\frac{1}{2}$ SM.

MISSED APPROACH.
Climb to 3000 direct
EDESE and hold.

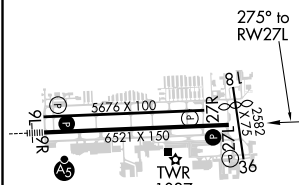
ATIS 125.025	DETROIT APP CON 132.35 284.0	PONTIAC TOWER★ 120.5 (CTAF) 0	GND CON 121.9	CLNC DEL 118,25	UNICOM 122.95
-----------------	---------------------------------	----------------------------------	------------------	--------------------	------------------

FLINT
FNT



Δ1750

ELEV 981	D	TDZE 974
----------	----------	----------



HIRL Rwy 9R-27L **L**
MIRL Rwy 9L-27R
REIL Rwy 27L **L**
REIL Rwys 9L and 27R

<div><div>3000 ↑</div><div>EDESE ✦</div></div>		VGSI and RNAV glidepath not coincident (VGSI Angle 3.00/TCH 42).		4 NM Holding Pattern	
*LNAV only.		<div><div><div><div><div>FAVLI 2600</div><div>✕</div><div>2600</div></div><div><div>275°</div><div>095°</div><div>275°</div></div><div><div>3000</div><div>GP 3.00° TCH 47</div></div></div><div><div><div>1.4</div><div>3.5 NM</div><div>6.2 NM</div></div><div><div>RW27L</div><div>1.4 NM to RW27L</div></div></div></div></div>			
CATEGORY	A		B	C	D
LPV DA	1174-3/4 200 (200-3/4)				
LNAV/ VNAV DA	1463-1 3/4 489 (500-1 3/4)				
LNAV MDA	1460-1 486 (500-1)		1460-1 1/4 486 (500-1 1/4)	1460-1 1/2 486 (500-1 1/2)	
C CIRCLING	1500-1 519 (600-1)	1540-1 559 (600-1)	1640-1 3/4 659 (700-1 3/4)	1640-2 659 (700-2)	