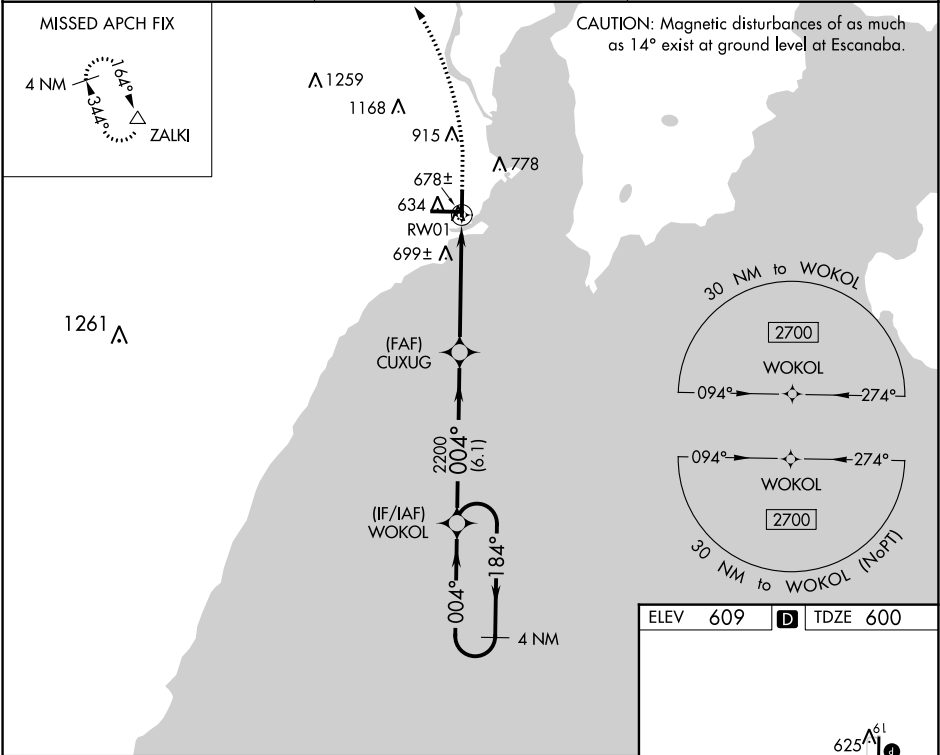


WAAS CH <b>69333</b> <b>W01A</b>	APP CRS <b>004°</b>	Rwy Idg TDZE <b>600</b> Apt Elev <b>609</b>	<b>5016</b>
--	------------------------	---	-------------

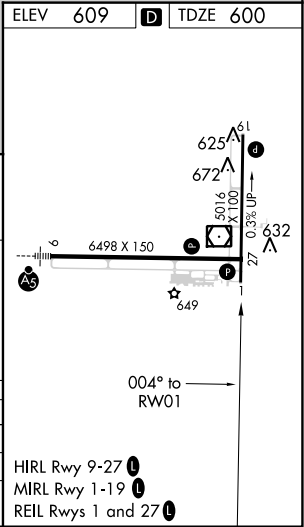
**RNAV (GPS) RWY 1**  
DELTA COUNTY (ESC)

<p><b>▼</b> Rwy 1 helicopter visibility reduction below 1 SM NA. DME/DME RNP-0.3 NA.</p> <p><b>▲</b> Straight-in Rwy 1 NA at night, Circling Rwy 1, 19 NA at night. When local altimeter setting not received, use Marquette altimeter setting and increase all MDA 180 feet and increase LP Cat C and D visibility ½ SM, LNAV Cat C and D visibility ¾ SM, and Circling Cat C visibility ½ SM and Cat D visibility ¼ SM.</p>	<p><b>MISSED APPROACH:</b> Climb to 1100, then climbing left turn to 2800 direct ZALKI and hold.</p>
---	--

<b>AWOS-3PT</b> <b>121.425</b>	<b>MINNEAPOLIS CENTER</b> <b>127.65</b>	<b>UNICOM</b> <b>122.8 (CTAF) 0</b>
-----------------------------------	--	--



4 NM Holding Pattern WOKOL	VGSI and descent angles not coincident (VGSI angle 3.00°/TCH 27°)	1100	2800	ZALKI
2700 184° 004°	004°	CUXUG 2200	3.00° TCH 45	RWY 1
6.1 NM		4.9 NM		
CATEGORY	A	B	C	D
LP MDA	940-1		340 (400-1)	
LNAV MDA	960-1		360 (400-1)	
CIRCLING	1060-1 451 (500-1)	1080-1 471 (500-1)	1280-2 671 (700-2)	1480-2 871 (900-2 ¾)



EC-1, 31 DEC 2020 to 28 JAN 2021

EC-1, 31 DEC 2020 to 28 JAN 2021