

VOR/DME	ESC	APP CRS	Rwy ldg	5016
110.8		351°	TDZE	600
Chan 45			Apt Elev	609

VOR RWY 1

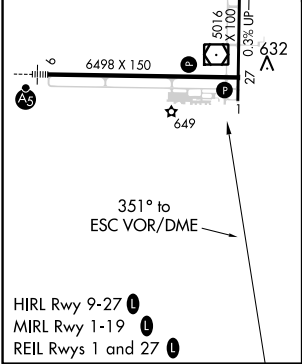
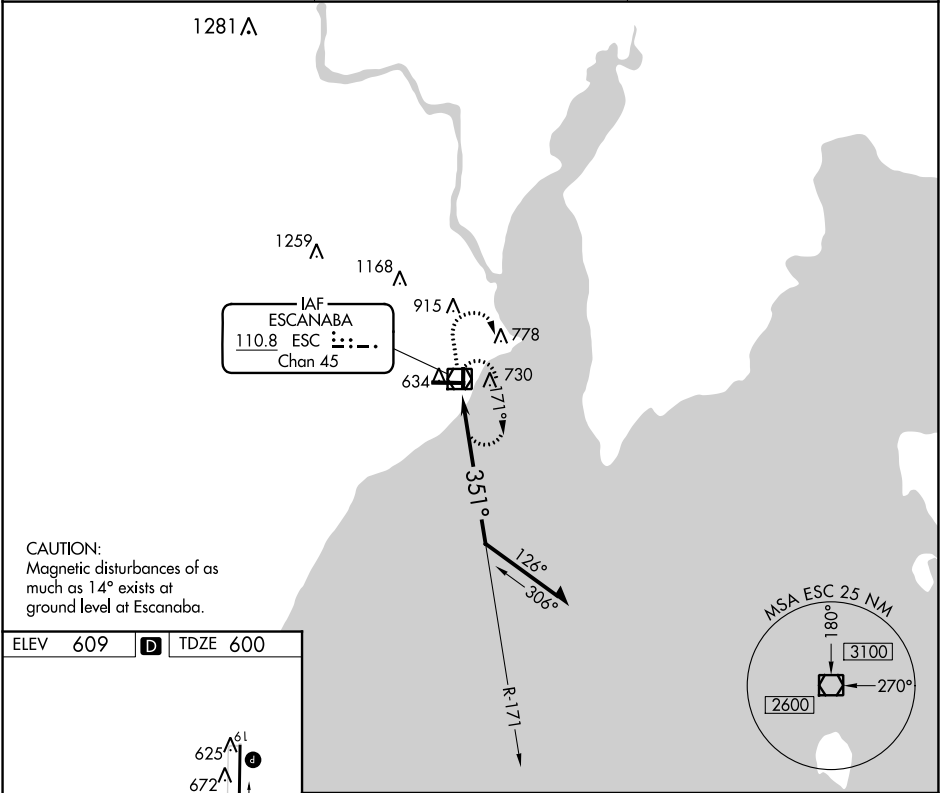
DELTA COUNTY (ESC)


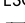
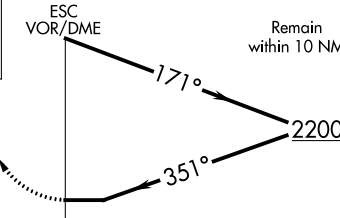

⚠

Straight-in Rwy 1 NA at night, Circling Rwy 1, 19 NA at night. Rwy 1 helicopter visibility reduction below 1 SM NA. When local altimeter setting not received, use Marquette altimeter setting and increase all MDA 180 feet and increase S-01 Cat C and D visibility ½ SM, Circling Cat C visibility ½ SM and Cat D visibility ¼ SM.

MISSED APPROACH: Climb to 2400 then right turn direct ESC VOR/DME and hold.

AWOS-3PT 121.425	MINNEAPOLIS CENTER 127.65	UNICOM 122.8 (CTAF) 0
---------------------	------------------------------	--------------------------



<div><div>2400 ↑</div><div></div><div>ESC </div></div> <div><div>ESC VOR/DME</div><div></div></div>				
CATEGORY	A	B	C	D
S-1	1080-1 480 (500-1)		1080-1 $\frac{3}{8}$	480 (500-1 $\frac{3}{8}$)
 CIRCLING	1080-1 471 (500-1)		1280-2 671 (700-2)	1480-2 $\frac{3}{4}$ 871 (900-2 $\frac{3}{4}$)