

WAAS CH <b>56301</b> <b>W02A</b>	APP CRS <b>022°</b>	Rwy Idg TDZE <b>623</b> Apt Elev <b>623</b>
--	------------------------	---

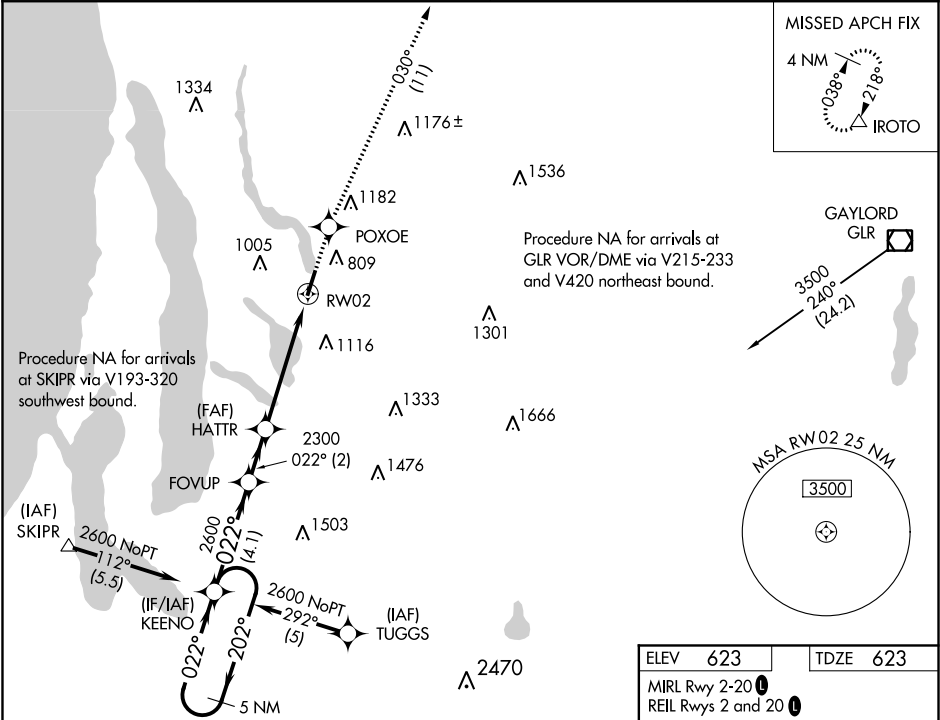
**RNAV (GPS) RWY 2**  
ANTRIM COUNTY (ACB)

**▼** DME/DME RNP-0.3 NA. VDP NA when using Cherry Capital altimeter setting. If local altimeter setting not received, use Cherry Capital altimeter setting and increase all DAs/MDAs 60 feet.

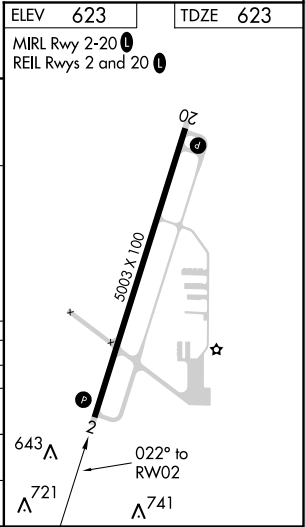
**▲**

MISSED APPROACH: Climb to 3000 direct POXOE and via 030° track to IROTO and hold.

AWOS-3 <b>119.275</b>	MINNEAPOLIS CENTER <b>132.9 338.3</b>	GCO <b>121.725</b>	UNICOM <b>122.7 (CTAF) 0</b>
--------------------------	--	-----------------------	---------------------------------



5 NM Holding Pattern		KEENO	FOVUP	3000	POXOE	IROTO
				$\uparrow$	$\star$	$\Delta$
					030° tr	
2600 $\leftarrow$ 202°					* 1.7 NM to RW02	
022° $\rightarrow$					RW02	
GP 3.00° TCH 43					* LNAV only	
		4.1 NM	2 NM	3.4 NM	1.7	
CATEGORY	A	B	C	D		
LPV DA	908-1 285 (300-1)					
LNAV/VNAV DA	NA					
LNAV MDA	1220-1	597 (600-1)	1220-1½ 597 (600-1½)	1220-1¾ 597 (600-1¾)		
CIRCLING	1260-1 637 (700-1)	1340-1 717 (800-1)	1360-2 737 (800-2)	1440-2¾ 817 (900-2¾)		



EC-1, 31 DEC 2020 to 28 JAN 2021

EC-1, 31 DEC 2020 to 28 JAN 2021