

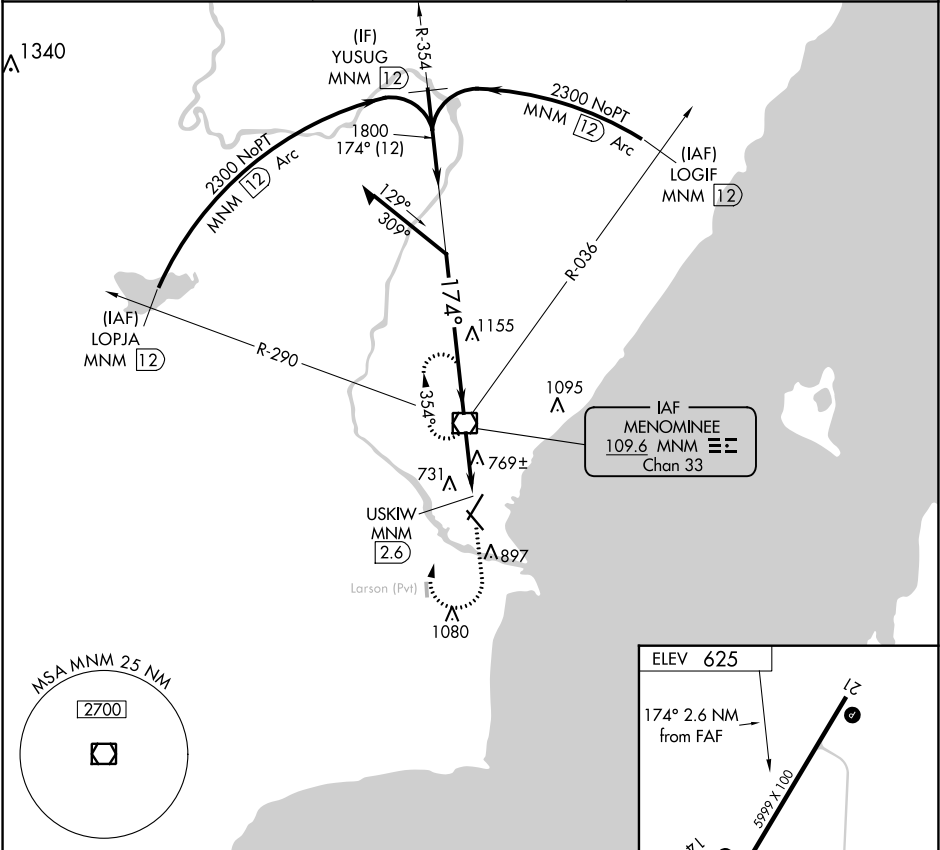
<div>VOR/DME MNM</div> <div>109.6</div> <div>Chan 33</div>	<div>APP CRS</div> <div>174°</div>	<div>Rwy Idg</div> <div>TDZE</div> <div>Apt Elev</div> <div>N/A</div> <div>N/A</div> <div>625</div>	<div>VOR-A</div> <div>MENOMINEE RGNL (MNM)</div>
--	---	--	--

⚠

Circling Rwy 14, 32 NA at night. When local altimeter setting not received, use Sturgeon Bay altimeter setting and increase all MDA 60 feet, increase Circling Cat C/D visibility ¼ mile.

MISSED APPROACH: Climb to 2200 then right turn direct MNM VOR/DME and hold.

<div>AWOS-3PT</div> <div>109.6</div>	<div>GREEN BAY APP CON★</div> <div>120.3 338.2</div>	<div>UNICOM</div> <div>122.8 (CTAF) 0</div>
---	---	--



<div>Remain within 10 NM</div> <div>2200</div> <div>354°</div> <div>174°</div> <div>1800</div> <div>2.6 NM</div> <div>USKIW MNM 2.6</div>	<div>2200</div> <div>↑</div> <div>MNM</div> <div>⊠</div>
<div>CATEGORY</div> <div>A</div> <div>B</div> <div>C</div> <div>D</div>	<div>FAF to MAP 2.6 NM</div> <div>Knots</div> <div>60</div> <div>90</div> <div>120</div> <div>150</div> <div>180</div> <div>Min:Sec</div> <div>2:36</div> <div>1:44</div> <div>1:18</div> <div>1:02</div> <div>0:52</div>
<div>Ⓢ CIRCLING</div> <div>1200-1</div> <div>575 (600-1)</div> <div>1200-1½</div> <div>575 (600-1½)</div> <div>1380-2½</div> <div>755 (800-2½)</div>	

EC-1, 31 DEC 2020 to 28 JAN 2021

EC-1, 31 DEC 2020 to 28 JAN 2021